

P8704

LEWISBURG FEMALE INSTITUTE



LEWISBURG W. VA.

NEW YEARS GREETINGS

CALENDAR FOR 1902

JANUARY 1902.

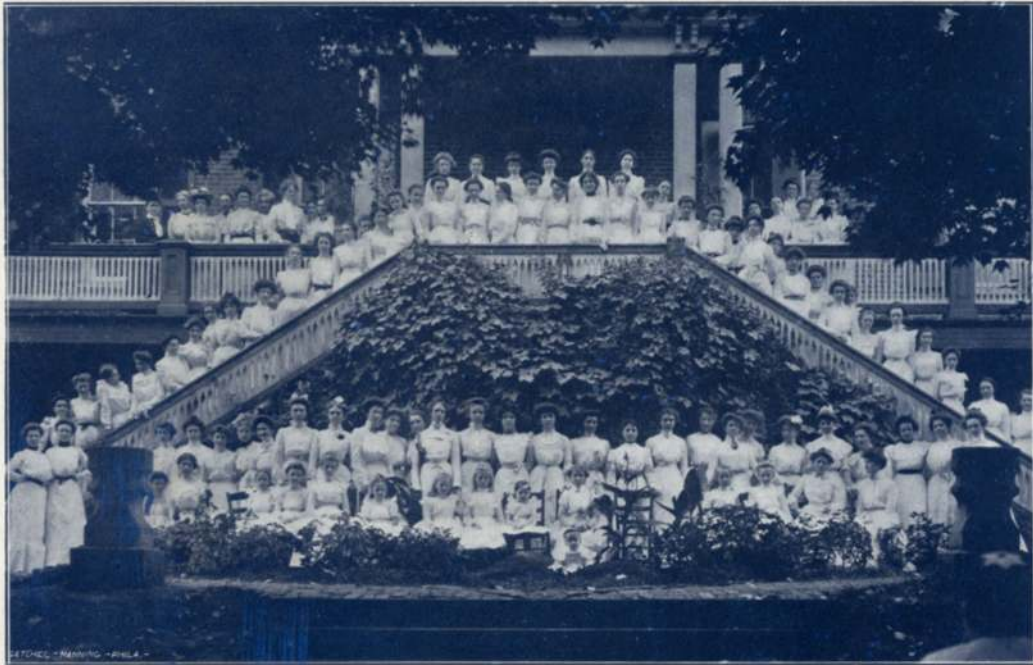
SUN.	MON.	TUE.	WED.	THU.	FRI.	SAT.
			1	2	3	4
5	6	7	8	9	10	11
12	13	14	15	16	17	18
19	20	21	22	23	24	25
26	27	28	29	30	31	

Desire to know what you ought,
What is worthy of your nature,
And helpful to your life

RUSKIN.

"AND THEY SHALL BE MINE," SAITH THE LORD OF HOSTS, "IN THAT DAY WHEN I MAKE UP MY JEWELS." ❀

Mal. III: 17



ETHEL - MARY - ANNA -

How reverent in our
midst she stood,
Or knelt in grateful
praise!
What grace of Christian
womanhood
Was in her household
ways!



For still her holy
living meant
No duty left undone;
The heavenly and
the human blent
Their kindred loves
in one



FEBRUARY 1902.

SUN.	MON.	TUE.	WED.	THU.	FRI.	SAT.
						1
2	3	4	5	6	7	8
9	10	11	12	13	14	15
16	17	18	19	20	21	22
23	24	25	26	27	28	

The dear Lord's best interpreters
Are humble human souls:
The Gospel of a life like hers
Is more than books or scrolls.



WHITTIER.

MARCH 1902.

SUN.	MON.	TUE.	WED.	THU.	FRI.	SAT.
						1
2	3	4	5	6	7	8
9	10	11	12	13	14	15
16	17	18	19	20	21	22
23 ³⁰	24 ³¹	25	26	27	28	29

Build thee more stately mansions, O my soul,
 As the swift seasons roll!
 Leave thy low vaulted past:
 Let each new temple, nobler than the last,
 Shut thee from heaven with a dome more vast,
 Till thou at length art free,
 Leaving thine outgrown shell by life's
 Unresting sea. HOLMES.



Then welcome each rebuff
 That turns Earth's smoothness
 rough
 Each thing that bids not sit
 nor stand but go.
 BROWNING.

1902 April 1902

Sun.	Mon.	Tue.	Wed.	Thun.	Fri.	Sat.
		1	2	3	4	5
6	7	8	9	10	11	12
13	14	15	16	17	18	19
20	21	22	23	24	25	26
27	28	29	30			

1902 May 1902

Sun.	Mon.	Tue.	Wed.	Thur.	Fri.	Sat.
				1	2	3
4	5	6	7	8	9	10
11	12	13	14	15	16	17
18	19	20	21	22	23	24
25	26	27	28	29	30	31



Whatsoever things are true, whatsoever things are honorable, whatsoever things are just, whatsoever things are pure, whatsoever things are lovely, whatsoever things are of good report; if there be any virtue, and if there be any praise, think on these things
 Phil. IV: 8.



L. F. I.
 WINTER UNIFORM
 AND CAP.

JUNE 1902.

SUN.	MON.	TUE.	WED.	THU.	FRI.	SAT.
1	2	3	4	5	6	7
8	9	10	11	12	13	14
15	16	17	18	19	20	21
22	23	24	25	26	27	28
29	30					

JULY 1902.

SUN.	MON.	TUE.	WED.	THU.	FRI.	SAT.
		1	2	3	4	5
6	7	8	9	10	11	12
13	14	15	16	17	18	19
20	21	22	23	24	25	26
27	28	29	30	31		

AUGUST 1902.

SUN.	MON.	TUE.	WED.	THU.	FRI.	SAT.
					1	2
3	4	5	6	7	8	9
10	11	12	13	14	15	16
17	18	19	20	21	22	23
24/31	25	26	27	28	29	30

Not failure, but low aim, is crime.
 LOWELL.
 Too low they build, who build beneath the stars.
 YOUNG.

GATCHEL & MANNING PHILA.



And so beside the silent sea
 I wait the muffled oar,
 No harm from Him can come to me
 On ocean or on shore.

I know not where his islands lift
 Their froned palms in air;
 I only know I cannot drift
 Beyond His love and care

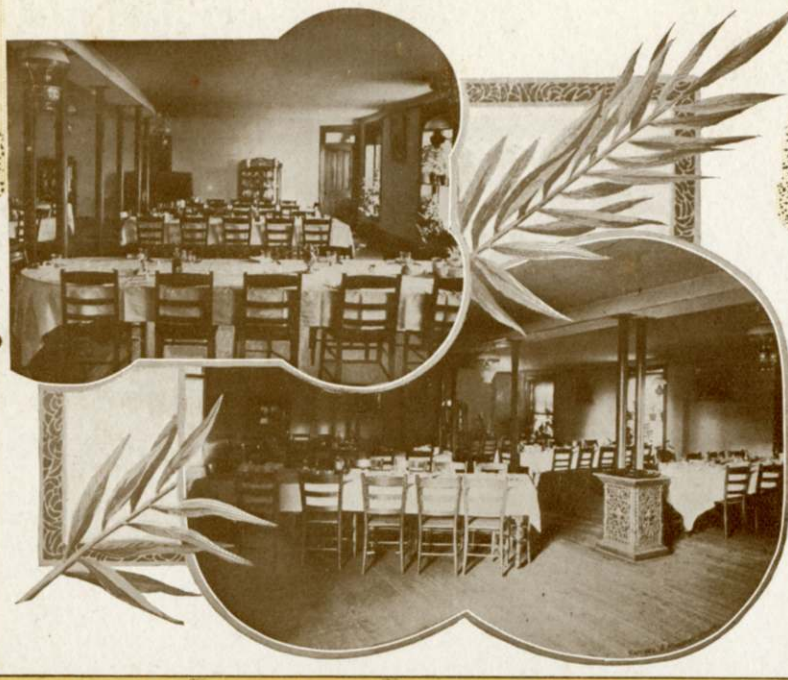
WHITTIER

SEPTEMBER 1902.

SUN.	MON.	TUE.	WED.	THU.	FRI.	SAT.
	1	2	3	4	5	6
7	8	9	10	11	12	13
14	15	16	17	18	19	20
21	22	23	24	25	26	27
28	29	30				

OCTOBER 1902.

SUN.	MON.	TUE.	WED.	THU.	FRI.	SAT.
			1	2	3	4
5	6	7	8	9	10	11
12	13	14	15	16	17	18
19	20	21	22	23	24	25
26	27	28	29	30	31	



NOVEMBER 1902.

SUN.	MON.	TUE.	WED.	THU.	FRI.	SAT.
						1
2	3	4	5	6	7	8
9	10	11	12	13	14	15
16	17	18	19	20	21	22
23 ³⁰	24	25	26	27	28	29

DECEMBER 1902.

SUN.	MON.	TUE.	WED.	THU.	FRI.	SAT.
	1	2	3	4	5	6
7	8	9	10	11	12	13
14	15	16	17	18	19	20
21	22	23	24	25	26	27
28	29	30	31			



Except a corn of wheat fall
into the ground and die, it
abideth alone: but if it die it
bringeth forth much fruit."

JOHN XII: 24.

Thee O my soul, forget it not.
Earth hath no consecrated spot.
Except where filtering thro' decay
Life wrought its work in agony.

'Tis thus Earth's noblest temples rise
Their pillars laid in sacrifice,
And greater grows the gain of Man'
Each time he dies to rise again.
R. L. TELFORD.

GATCHEL & MANNING PHILA.

L. F. I. FALL AND
SPRING UNIFORM