

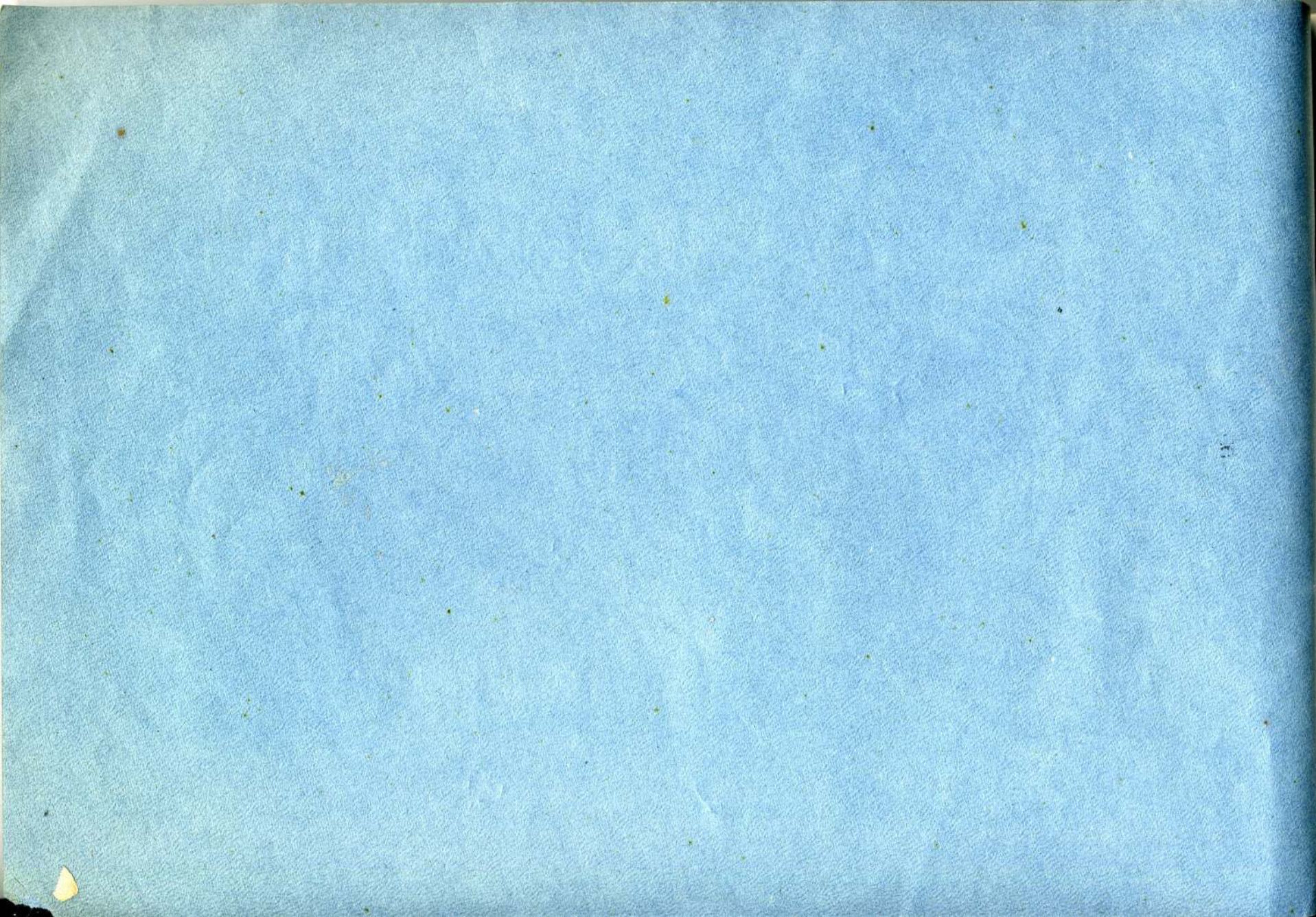
P4119

SOUVENIR BEAUTIFUL
OF BLUEFIELD
THE PICTURESQUE.

A decorative scrollwork frame surrounds the central text. At the bottom center of the frame is a shield-shaped crest with a decorative border.

WALLACE SOUVENIR SERIES.





Oct 20, '11

SOUVENIR BEAUTIFUL, of
Bluefield the Picturesque

*Metropolis of Pocahontas Coal
Fields, in West Virginia*

The Wallace Souvenir Series

Copyright 1907

S. S. WALLACE

Bluefield, W. Va.

For Miss Z. E. Chappell,
Wheatland, Va



The Stone Printing
& Manufacturing Co.
Roanoke, Va., U.S.A.



PRINCETON AVENUE.



THE BLUEFIELD INN—IN BLUEFIELD.

Bluefield Looks Good to Me.



SOME folks they jes' keep rantin' round,
I reckon that's their way—

A findin' fault with everything,
A "knocker" in life's fray;

They'd like to change sun, moon and stars,
There's nothin' right, you see;

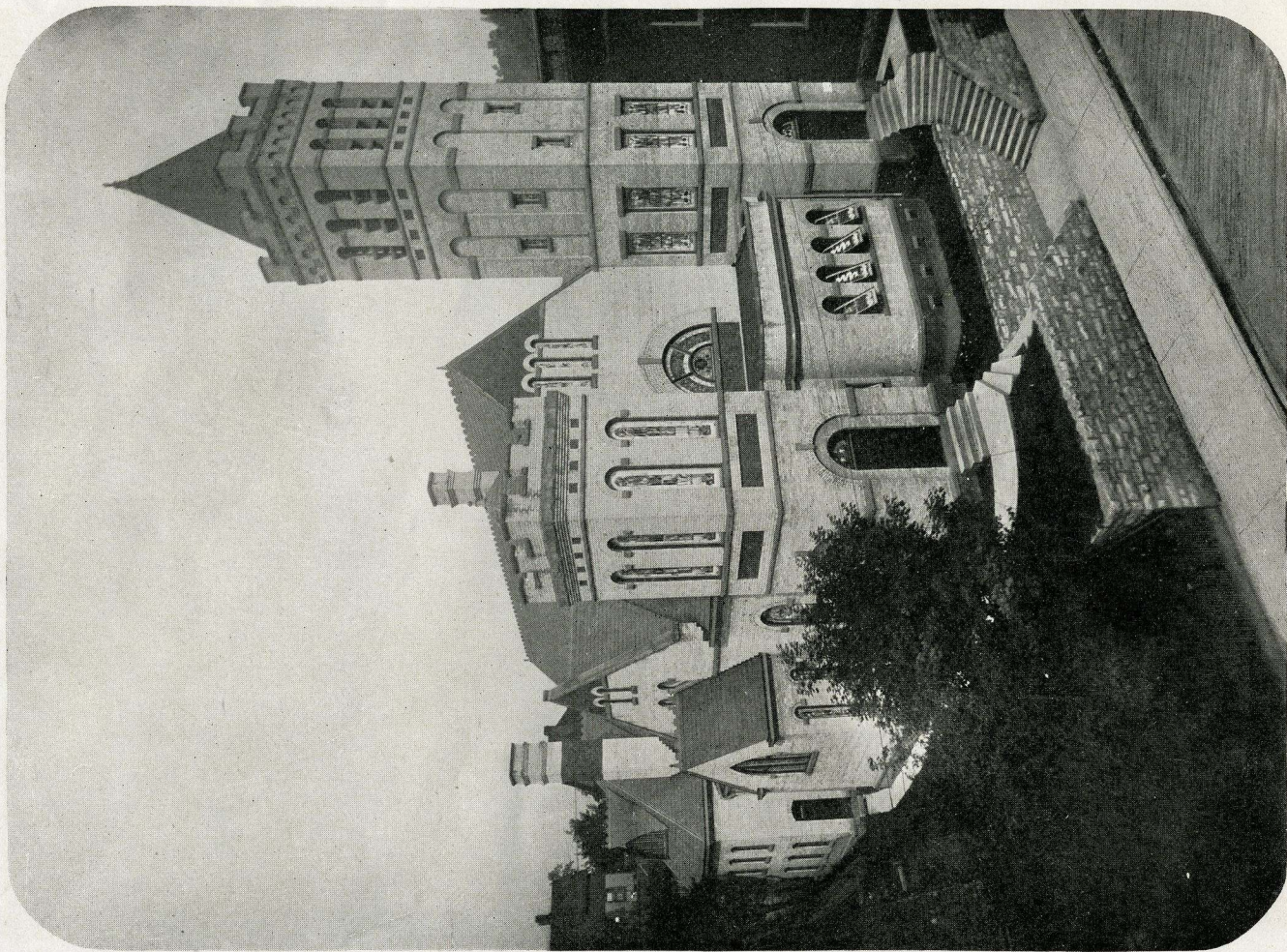
In Bluefield they say, its all-fired bad—
But, it—looks—good—to—me!

The weather, too, they give a roast;
Too hot, too cold, too dry,
The rain's too wet, there's too much dust,
The mud is ankle high;
In fact, there's nothin' 'neath the skies
That's absolutely free
From jests and sneers in old Bluefield,
But, it—looks—good—to—me!

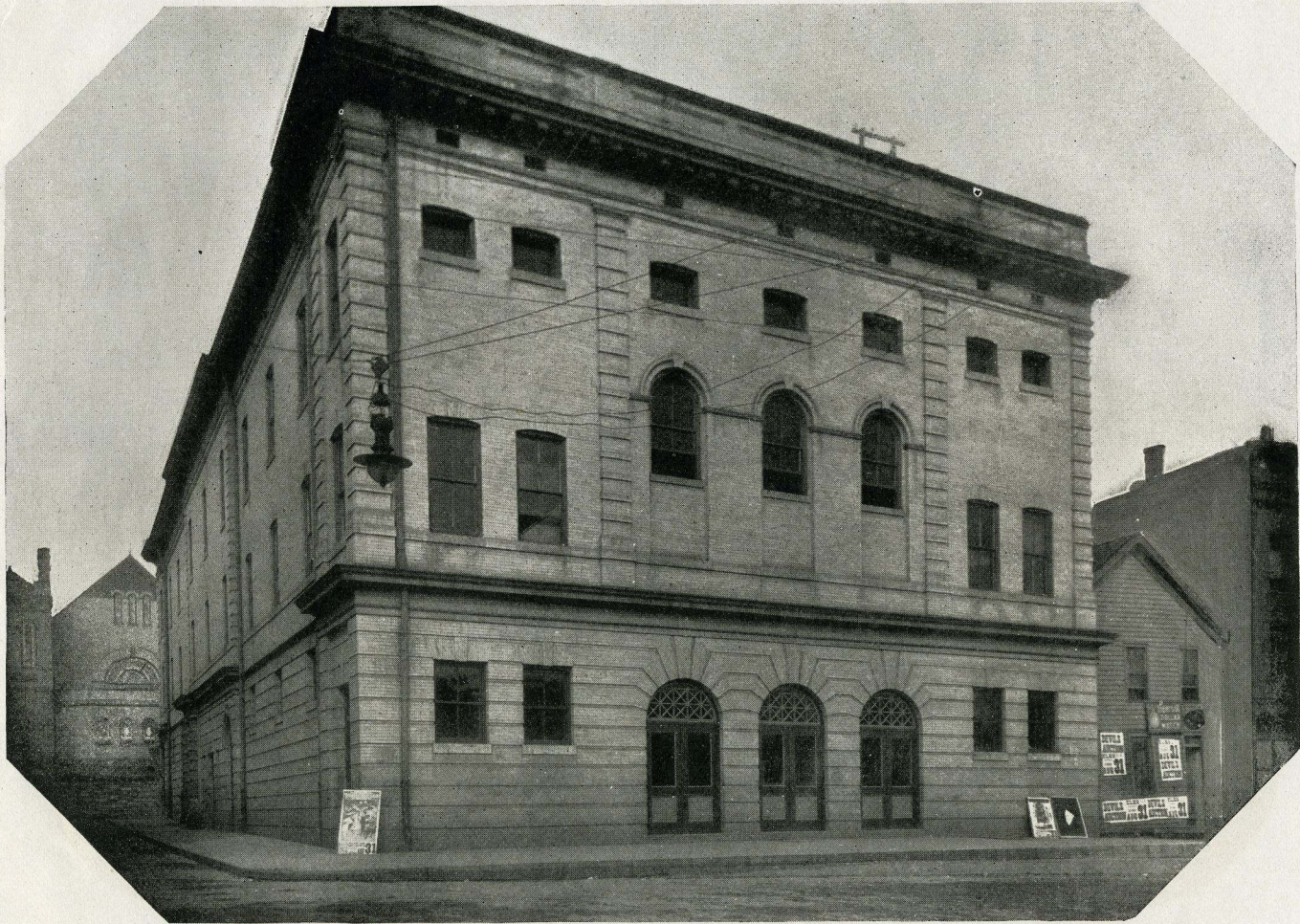
How oft we get the same old dope
About our world of sorrow;
Of care and woe where'er we go,
And troubles that we borrow;
But now I want to say right here
In all sincerity—
Bluefield's the best I've ever seen,
And, looks—durn—good—to—me!



BLAND STREET.



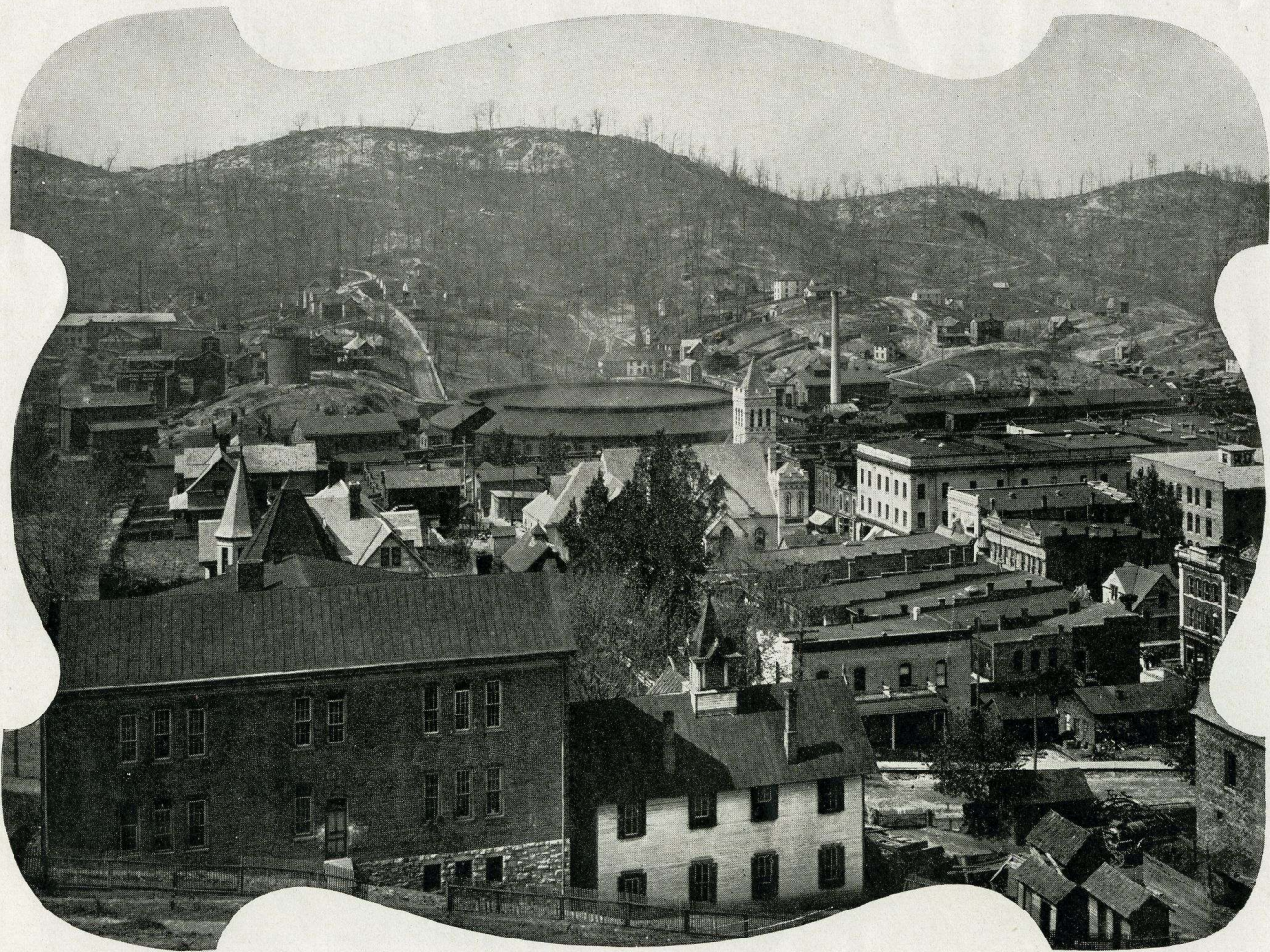
BLAND STREET METHODIST EPISCOPAL CHURCH—REV. D. EMORY HAWK, PASTOR.



ELK'S OPERA HOUSE AND CLUB.



FIRST NATIONAL BANK BUILDING.



HUMMING-BIRD'S-EYE VIEW OF HUMMING BLUEFIELD.

Picturesque Environments of the City of Bluefield.



BLUEFIELD is snugly nestled in the shadow of Stony Ridge and East River Mountain. Close on either side their high rock-ribbed summits touch the skies. As one gazes upon these as they rise in their own loveliness and sublimity a feeling of eloquence and inspiration steals over him. But it is lovelier still to climb their rugged heights and to view the landscape over. Far, far away in the distance can be seen valley and crag encircled alternately in sunshine and cloud.

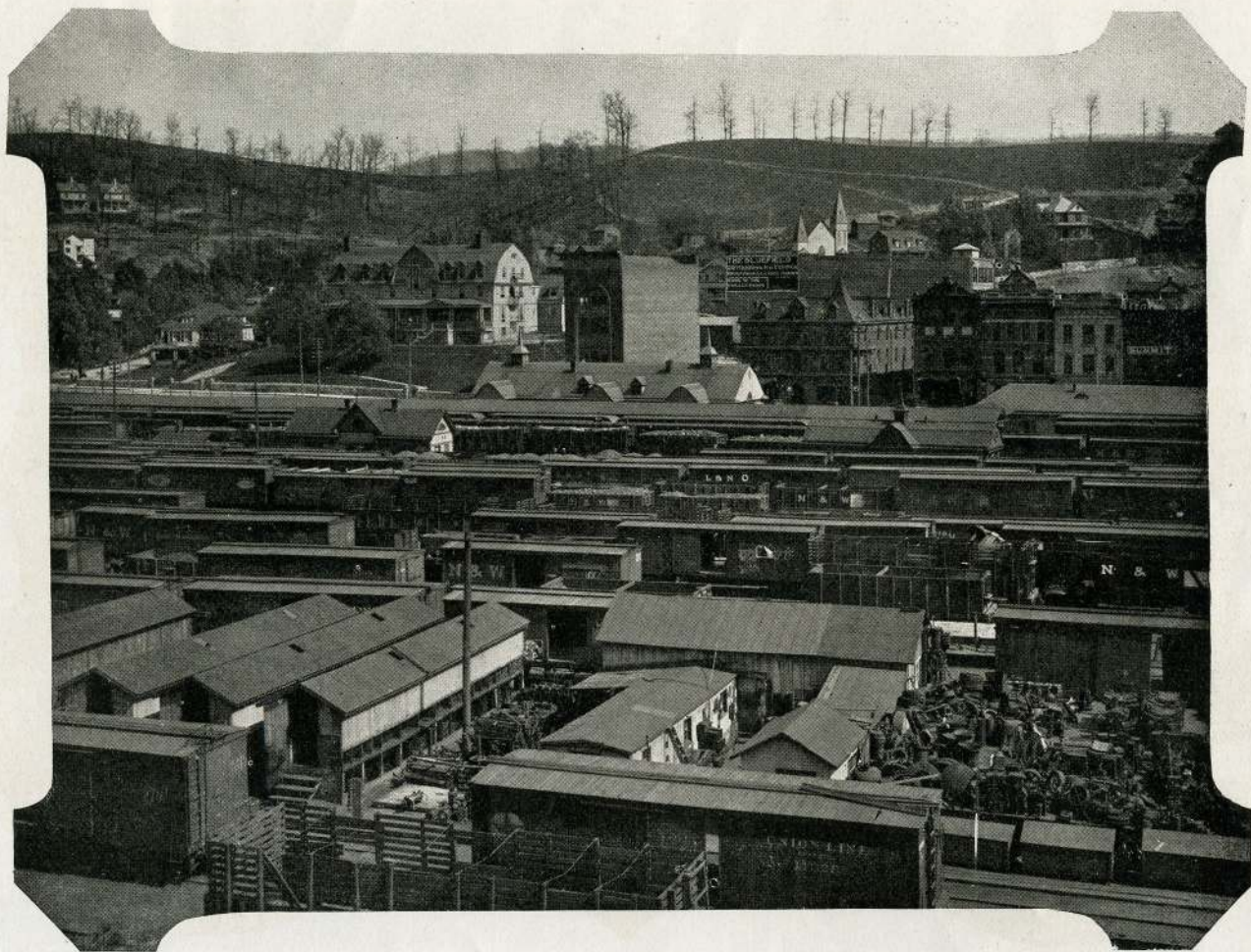
An exquisite picture of the picturesqueness of Bluefield is when the glow of sunset illumines East River Mountain. Awhile before sunset clear afternoons East River Mountain, the giant Southern sentinal and dividing line between West Virginia and the mother State, takes on a golden glow and holds all spectators spellbound by the glorious beauty of its coloring. There is a delicious shading and an halo about it which the noontide can not claim, which causes artists to gaze with rapture and plain everyday individuals to stop and wonder at its beauty.

But it is only a short time until the orb of glorious day sinks behind the rocky crags of Stony Ridge and succeeded by the many twinkling electric lights and other evidences of material advancement in the City.

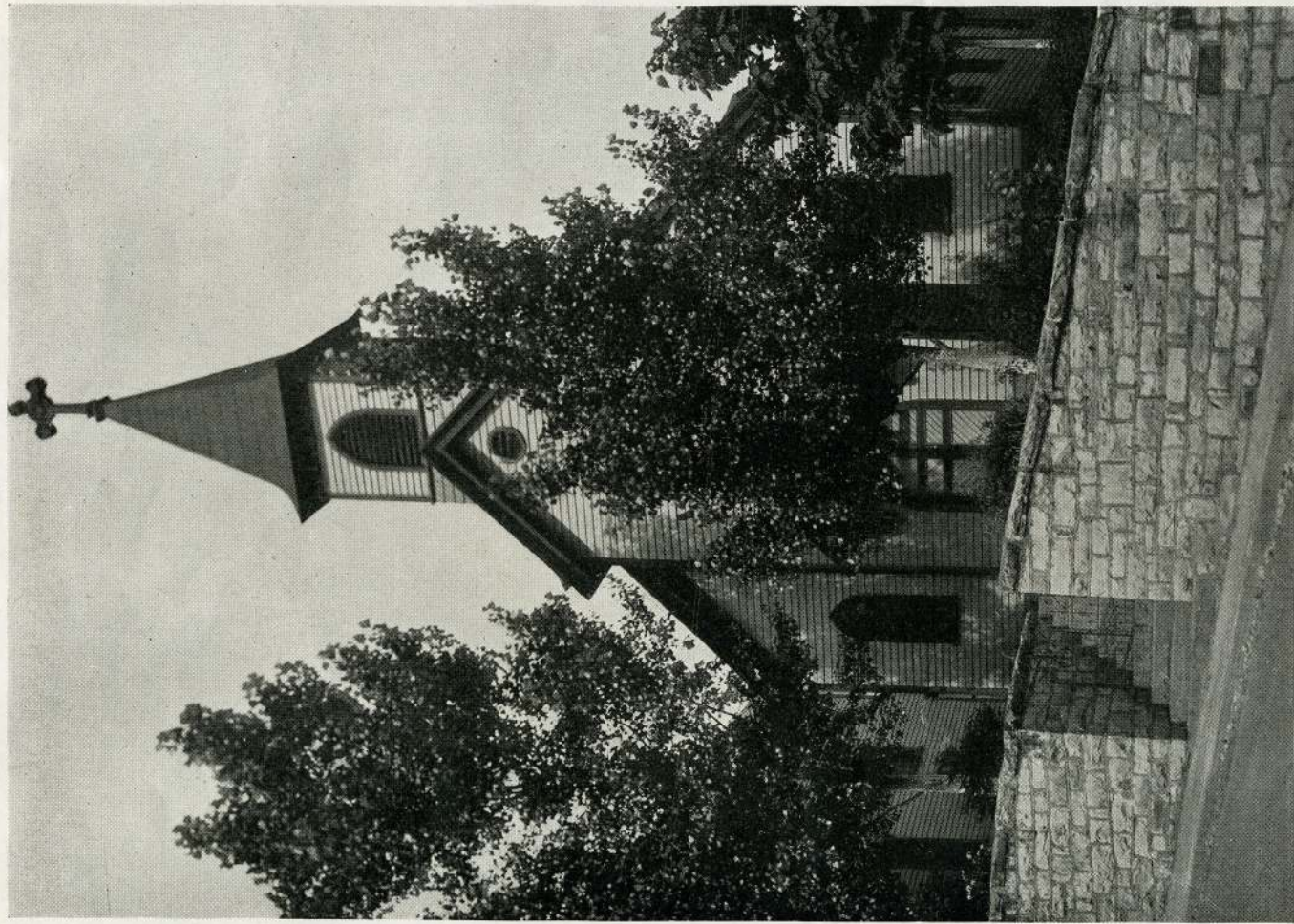
And then the mind of the beholder reverts to the commercial side of the situation and hastens to investigate the many business opportunities offered the investor in this City and section.



RESIDENCE OF MR. BANE S. HIGGINBOTHAM, SOUTH BLUEFIELD.



THE N. & W. YARDS FROM NORTH SIDE.



CHURCH OF THE SACRED HEART—FATHER E. OLIVIER, PASTOR.





CHRIST'S EPISCOPAL CHURCH—REV. R. W. TRAPNELL, RECTOR.



YARDS FROM MIDDLE OVER-HEAD BRIDGE.

Business Attractions.



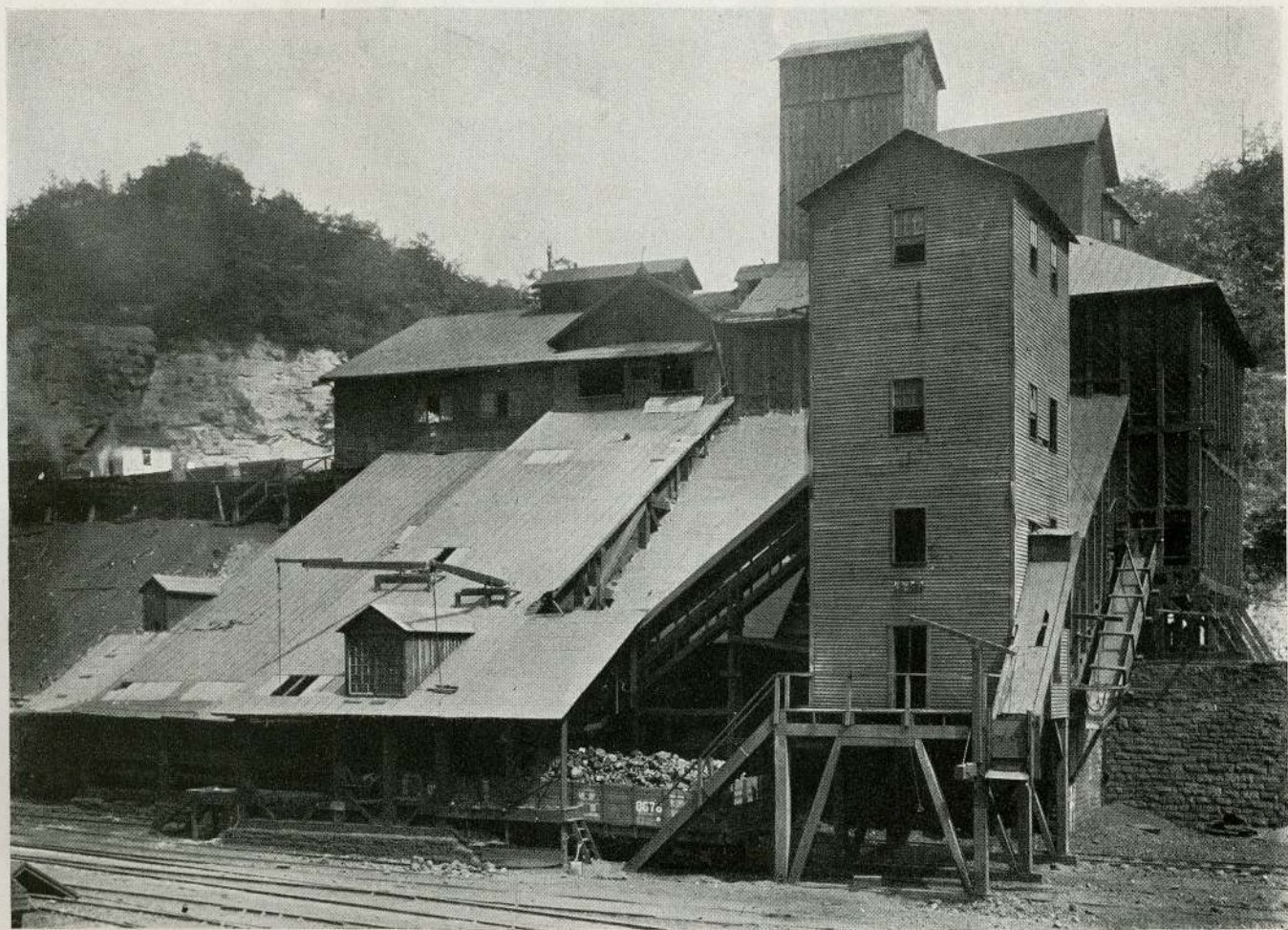
HERE are located the Round House, Repair Shops, Scale House, Division Offices and mammoth yards of the Norfolk & Western Railway Company. An average of eight hundred cars of coal and coke are weighed and billed here daily. Forty-five thousand cars loaded and empties are handled here monthly. Here are wholesale houses of dry goods and notions, groceries, hardware, furniture and manufacturies of dressed lumber, flour, foundry castings and mining cars.

Is situated one hundred and seven miles west of Roanoke, Virginia, at an elevation of 2,652 feet, and has a population of 17,000.

While Bluefield is one of the youngest cities in the State, it is one of the most important, as the following resources of its banks will show :

First National,	-	-	-	-	-	-	\$1,300,000.00
Flat Top,	-	-	-	-	-	-	750,000.00
American,	-	-	-	-	-	-	420,000.00
State Bank,	-	-	-	-	-	-	166,000.00
Union Bank & Trust Co.,	-	-	-	-	-	-	200,000.00

Making a grand total of nearly three million.



TYPICAL COAL MINING SCENE, NEAR BLUEFIELD—TIPPLE OF THE "WEST MINE,"
POCAHONTAS CONSOLIDATED COLLIERIES COMPANY.

D-336

