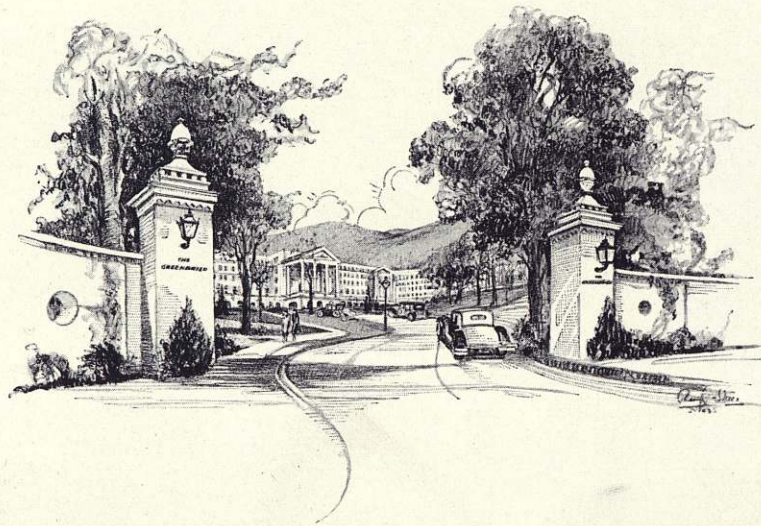


P1928

White Sulphur Springs

Property of
JAMES D. SISLER
Please return

THE GREENBRIER AND COTTAGES



White Sulphur Springs
West Virginia



*The East Portico
Main Entrance of the Greenbrier*

The Greenbrier and Cottages

White Sulphur Springs

IN a mountain-rimmed valley of the Alleghanias, away from the noise and clamour of the city, the Greenbrier, America's most beautiful hostelry, offers to the modern world a life heretofore found only in the great resorts of Europe. Unlimited in space, luxurious in its appointments and furnishings, meticulous in its service, gracious in its entertainment, the Greenbrier has that intangible atmosphere that is continental. It is a cosmopolitan rendezvous of society and

fashion, of art and letters. During the spring and autumn seasons the panorama of its life is colorful and brilliant; the home of distinguished statesmen and diplomats, it has a community interest in music, literature, art and public affairs.

The Greenbrier estate, seven thousand acres two thousand feet above the sea, including some of the most colorful mountain scenery in the Virginias, is a matchless sports center. Two hundred and fifty miles of bridle trails wind among the hills. Polo—during spring, summer and autumn. Three golf courses lie in the rolling country. Five

tennis courts, both clay and en tout cas, each year are used for championship matches. Forests and streams provide hunting and fishing in season. A private landing field has been constructed, and cabin planes are available for the use of flying enthusiasts.

Built to replace the historic "Old White," the gathering place of early presidents and great statesmen, for generations the center of social and political influence, the Greenbrier preserves as a priceless heritage the traditions of its predecessor—

the beauty and romance, the charm and hospitality of the Old South.

Some of the historic Cottage Rows—Georgia Row, Baltimore Row, Florida Row, Tansas Row, and South Carolina Row—which still retain the quaint character of the early days, have been fully restored, and thirty cottages, many equipped for housekeeping, all with hotel service, make ideal homes for families who wish a life of comfort and informality.

The Greenbrier, offering both European and American plans, is the ideal country residence for all seasons.



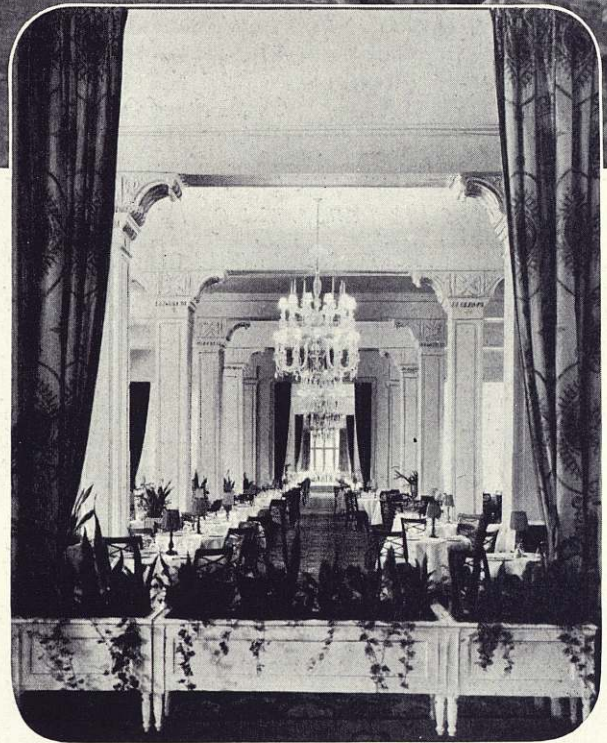
The Virginia Wing

On the site of Old Virginia Row



The Lobby

*Four great Georgian Colonial drawing rooms
reflect the hospitality and charm
of the Old South*



Dining Room

From the Main Lobby



The Organ Room

*Concerts are given each day during tea and
after dinner*

A Lounge Doorway



*South Carolina Row
Greenbrier Cottages
offer a life of
informality*

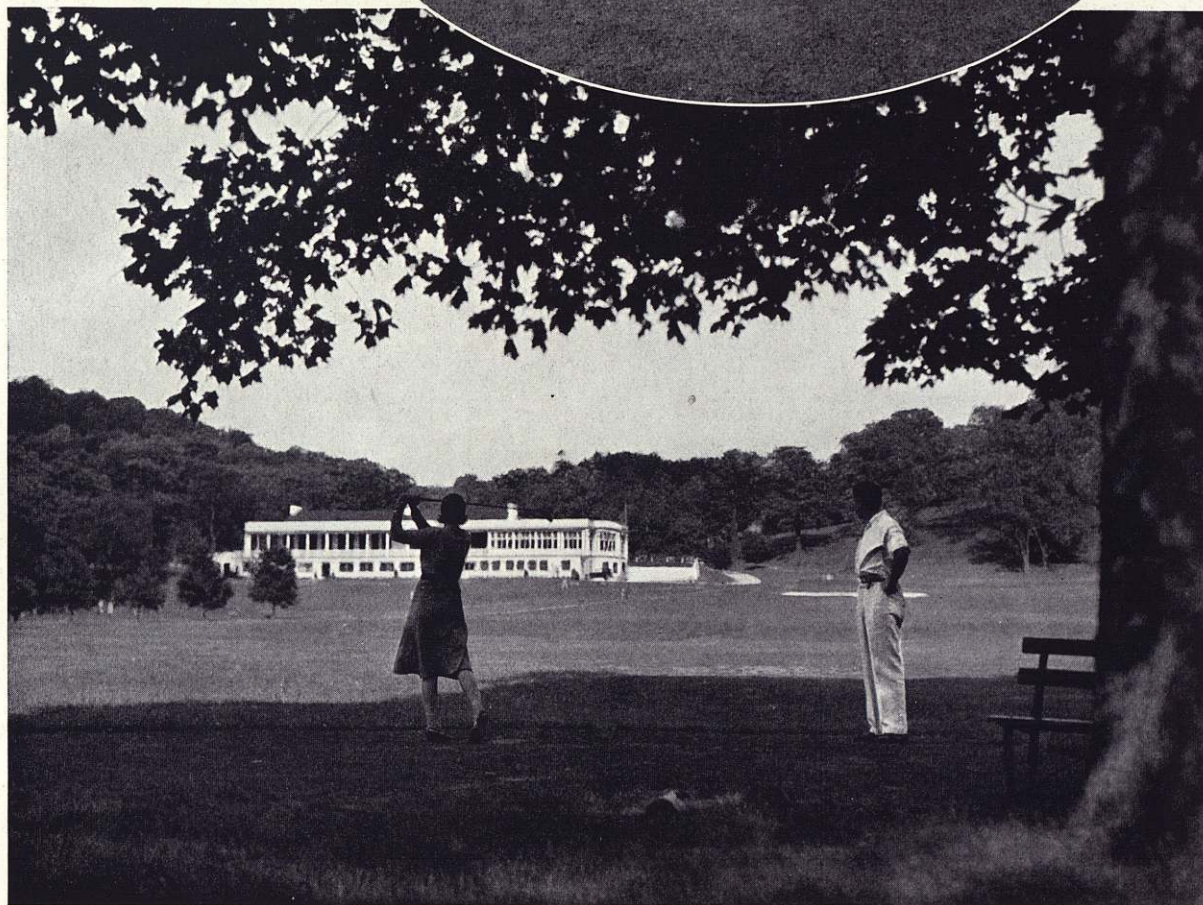
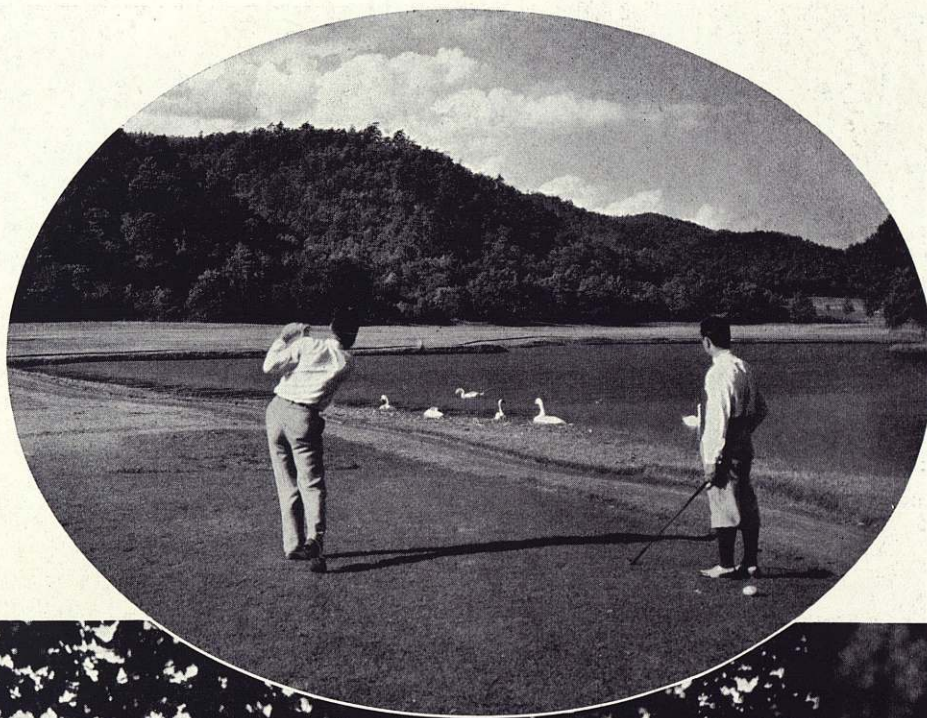


The Presidents' Cottage

For more than half a century the "Summer White House," the Presidents' Cottage is now a museum containing the Greenbrier Collection of relics of early days

45 Holes of Golf

Driving off tee at the sixteenth hole of the "Old White," which ranks as one of the finest eighteen-hole courses in America

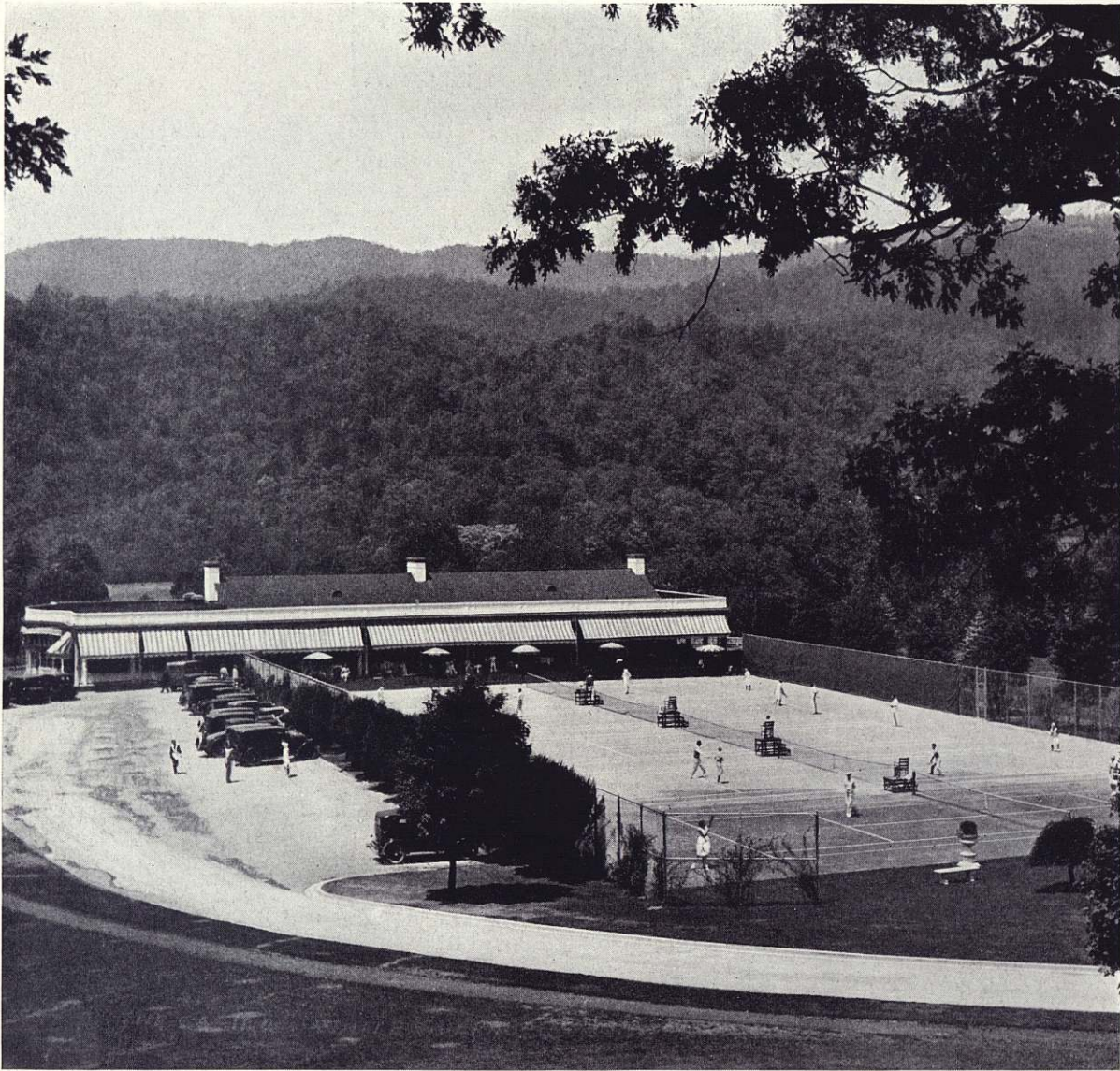


The ninth fairway of "Lakeside," with the Casino in the distance



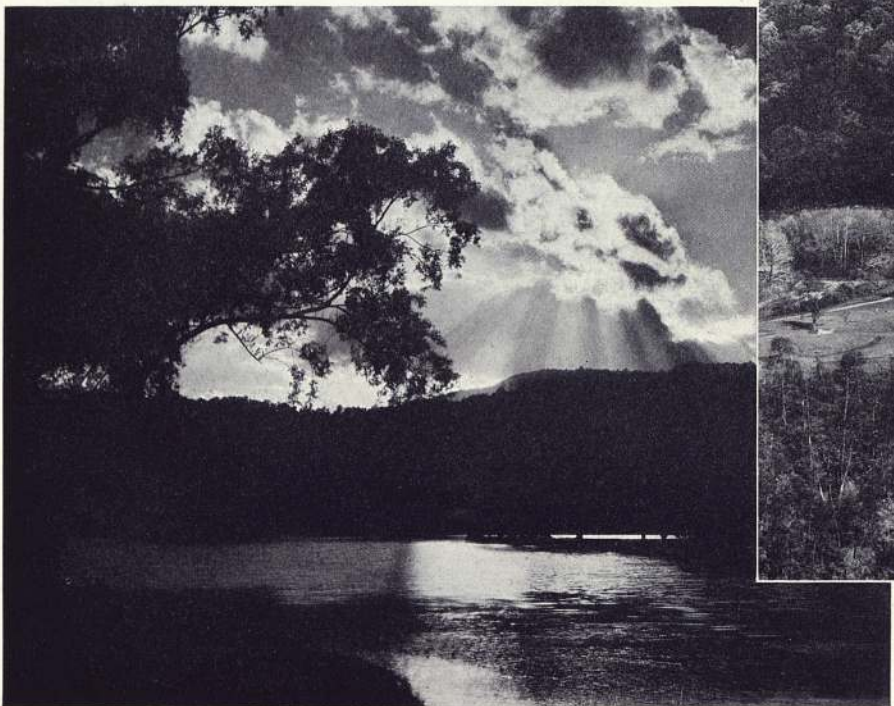
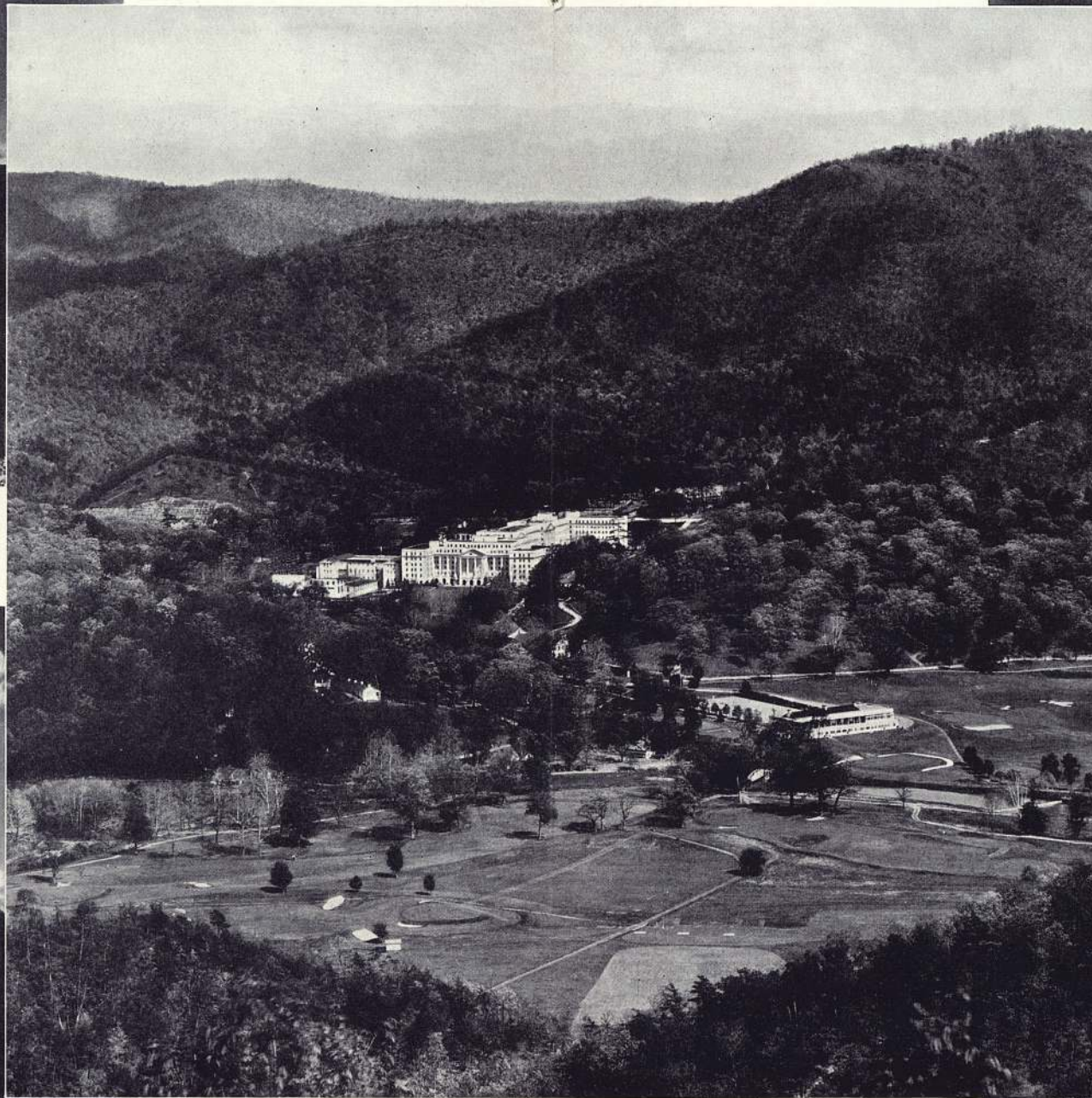
With Boot and Spur

Some of the finest riding in the Virginias is provided on the seven-thousand-acre estate of the Greenbrier, with its two hundred and fifty miles of bridle trails. There is a stable of seventy thoroughbred saddle horses and hunters

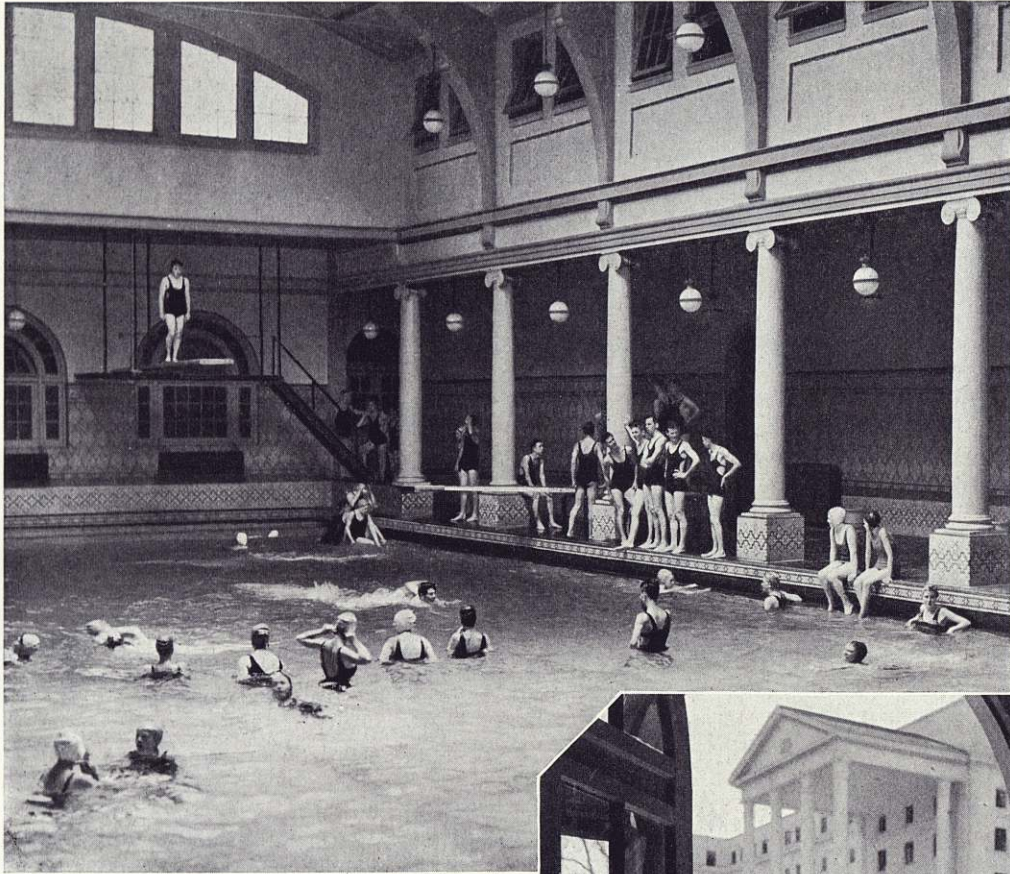


The Casino and Tennis Courts

Each year the country's ranking players participate in matches on the courts of the Greenbrier Golf and Tennis Club

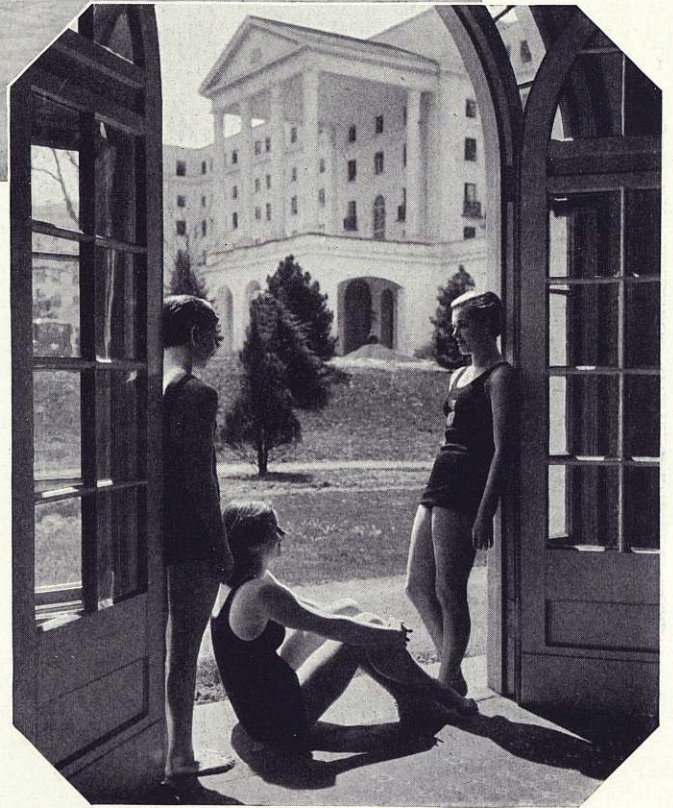


*The Greenbrier and Cottages
In the Heart of the Alleghanies*



The Greenbrier Pool

One of the largest indoor pools in America. Built of mosaic tile and filled with constantly changing water from Alvon Springs



"A Place in the Sun"

Stretches of sand lie outside the doors of the swimming pool



Kate's Mountain Club

*At this mountain lodge, overlooking Greenbrier
Valley and the Airport, the incomparable
Fred and Helen serve luncheons
and Southern dinners*



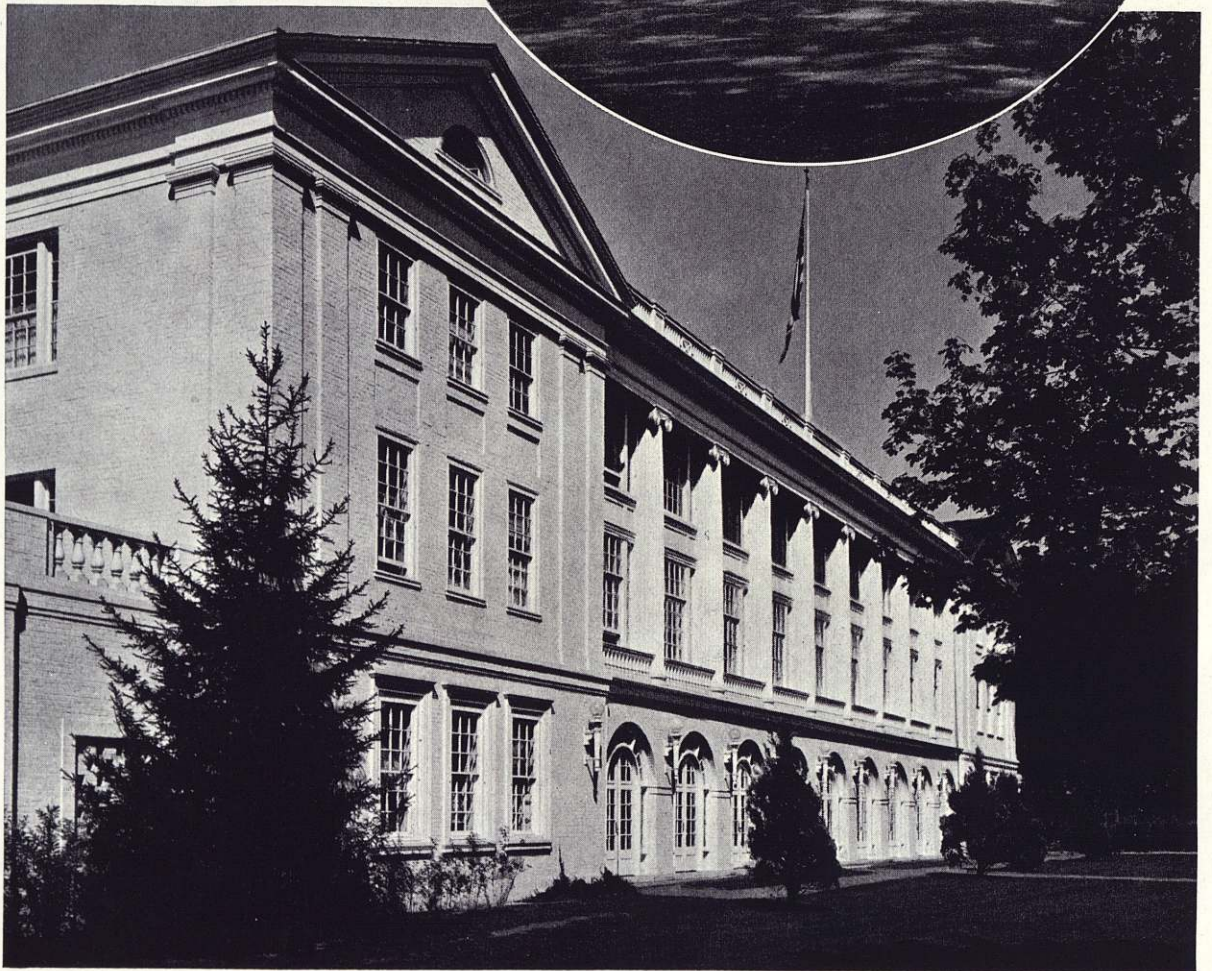
The Casino Terrace

A popular place for luncheon

*White Sulphur Spring
Famous since 1778*



*The Bath House and Medical
Building*





*The Greenbrier Airport
Five thousand by twenty-five hundred
feet, is within one mile of
The Greenbrier*



*The Greenbrier Junior Colony
Has its own social and intellectual life.
School in the mornings, with study and
activities, supervised play on the lawn
each evening, parties, pageants, and
a fancy dress ball provide occu-
pation and amusement for
the children of guests*

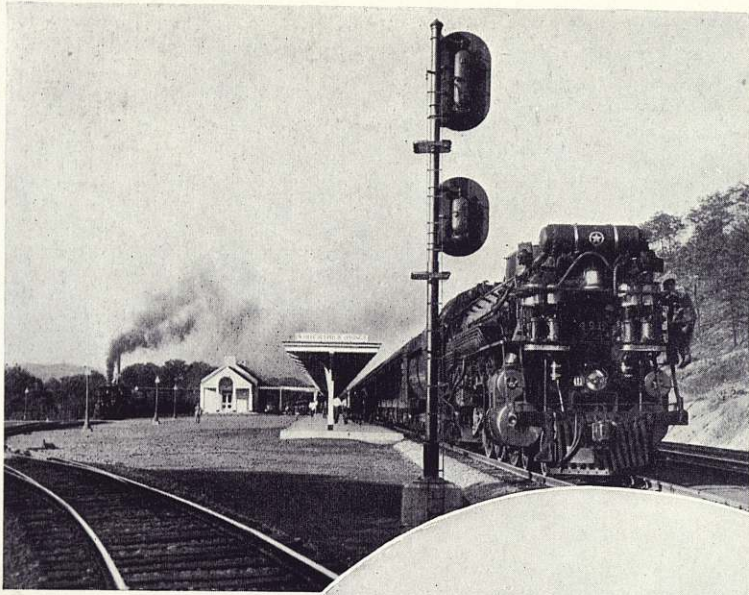


*The Baxter Lee Chadwicks arriving by the "Old White" Stage in August,
1870. A scene from the Children's Lawn Party in the summer of 1932*



*The Trail Home
Along Hickory Knob toward the
Greenbrier*

Canoeing on Swan Lake

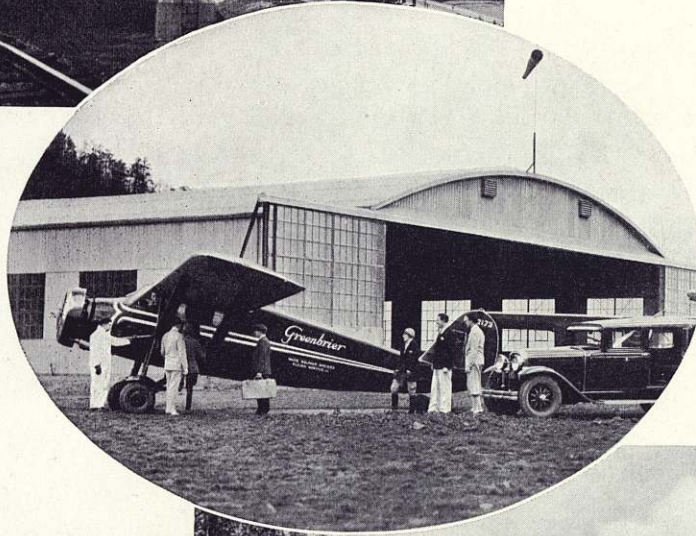


The trains of the Chesapeake and Ohio serve White Sulphur Springs with the maximum of luxury and speed

The F.F.V.—Overnight from New York, Philadelphia, Baltimore and Washington

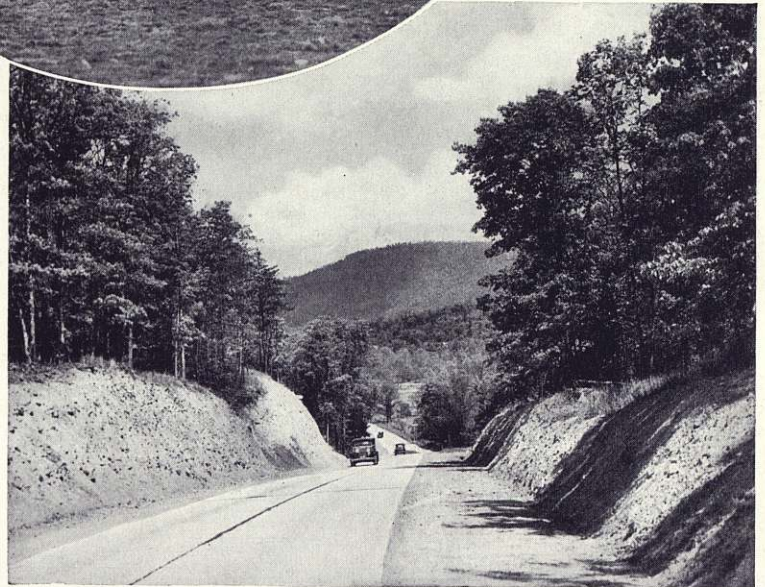
The Sportsman—Overnight from Detroit, Cleveland, Columbus and Toledo

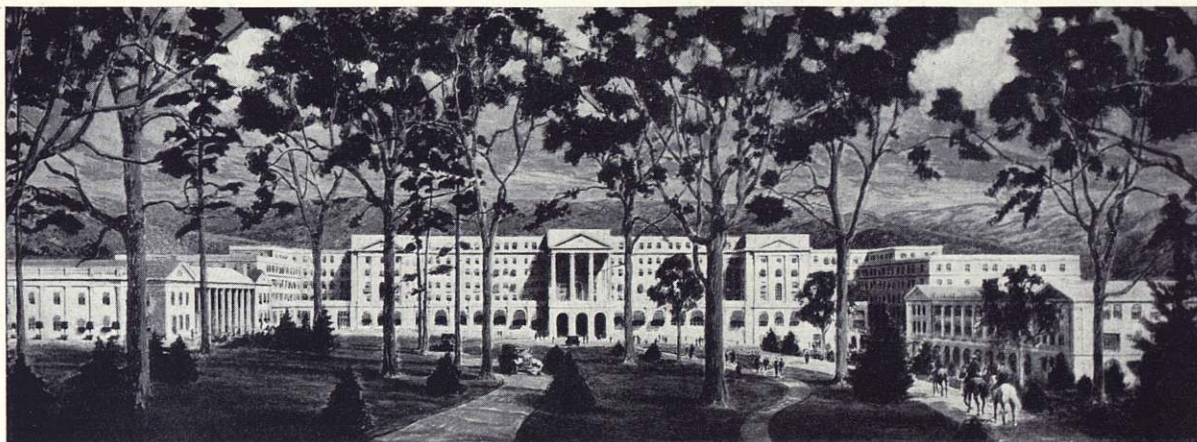
The George Washington—Provides excellent service from Cincinnati, Louisville, Chicago and St. Louis



The Greenbrier Airport, with complete hangar service, provides the finest landing field in the Central South

The Midland Trail, U. S. Route No. 60, following the westward path of the early pioneers, passes the gate of The Greenbrier





The Virginia Wing

The Greenbrier

The Bath House

White Sulphur Springs, West Virginia

GOLF—Three courses with grass greens. Two of eighteen holes and one of nine.

RIDING—A stable of thoroughbred saddle horses and hunters. Two hundred and fifty miles of trails.

TENNIS—Five championship courts.

SWIMMING—Large indoor mosaic tile pool.

ARCHERY—Three ranges. Also indoor facilities.

TRAP-SHOOTING—Trap conveniently located.

HUNTING—In season.

FISHING—In season.

POLO—During spring, summer and autumn.

AVIATION—The Greenbrier Airport, within a mile of the hotel, provides exceptional facilities for air-minded patrons. Cabin plane for short and long-distance flights. Hangar and service facilities.

CANOEING—On Swan Lake.

DANCING—Dinner dancing in the Terrace Dining Room, at the Casino during luncheon, and in the Ballroom from ten-thirty until midnight.

R. K. Petticord, Dancing Instructor.

MOTION PICTURES (Sound)—Each evening in the Auditorium.

LITTLE THEATRE—For 16mm film. Sound accompaniment. Operator available for showing of local films and personally-made movies.

THE GREENBRIER—Conducted upon the European plan. Table d'hote meals, in addition to a la carte, for those who prefer a fixed per diem rate, are available.

THE COTTAGES—Housekeeping and non-housekeeping. Located within a short distance of the hotel.

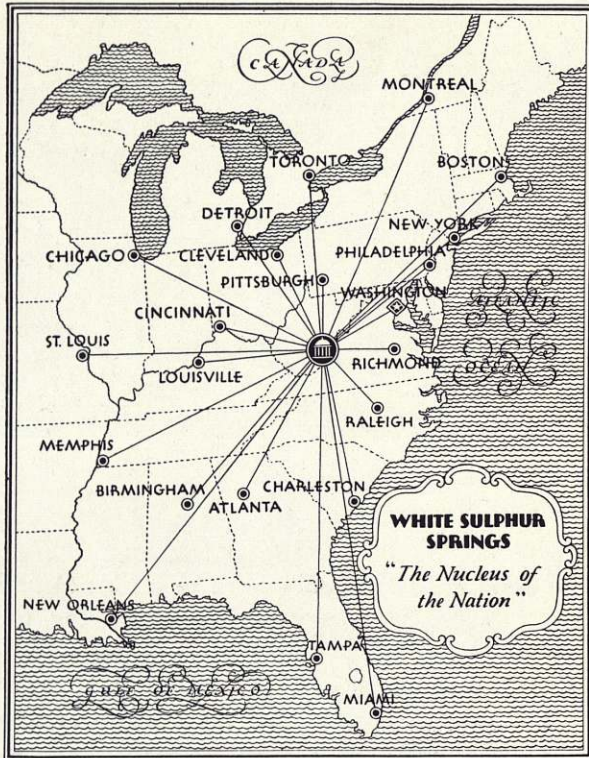
GRAHAM-ECKES SCHOOL—Summer session at the Greenbrier. A fully accredited college preparatory school. Member of the Secondary Education Board and the Progressive Educational Association.

MEDICAL DEPARTMENT—Hydrotherapeutic equipment the finest in America. Facilities for every type of bath. Laboratories for all clinical tests. Offers every treatment to be found in the great European health resorts.

SHOPS—In the Lower Lobby.

MOTOR AND GARAGE SERVICE—Individual fireproof stalls located on the hotel grounds. Seven-passenger sedans available at all times.

WATERS—Various spring waters from the White Sulphur region are served in the Greenbrier and are available for shipment.



REPRESENTATIVES

- NEW YORK CITY—Mr. E. Burks
The Plaza Hotel
- CLEVELAND—Hotel Cleveland
- BOSTON—Mr. R. S. Gardner
The Copley-Plaza
- DETROIT—Mr. Charles A. Hughes
Detroit Athletic Club
- PHILADELPHIA—Mr. I. N. Ranck
Bellevue-Stratford
- WASHINGTON, D. C.—The Mayflower
- PITTSBURGH—Mr. G. D. Shrum, Pittsburgh
Athletic Club or 1508 Law and
Finance Building
- CHICAGO—Drake Hotel (Travel Bureau)
- HAVANA—National Hotel of Cuba
- AND
- All CHESAPEAKE AND OHIO RY. Passenger
Representatives in the Various Cities

CLIMATE—WHITE SULPHUR SPRINGS

Temperature and Weather Records					
Compiled by U. S. Department of Commerce—Bureau of Fisheries					
Month 1932	Temperature Mean	Clear Days	Rainy Days	Cloudy Days	Snow
March	38	24	1	5	1
April	52.3	22	3	5
May	64.1	27	3	1
June	72.8	27	3
July	76.5	28	2	1
August	73	28	3
September	65.1	24	7
October	54.6	23	1	7
Totals	*62.05	203	16	26	1

*Average, or mean temperature for eight months. Altitude 2,000 feet.

For detailed information and additional literature, address

L. R. Johnston, *General Manager*
THE GREENBRIER AND COTTAGES
White Sulphur Springs, W. Va.

