

P 1508

PROSPECTUS

OF

PRESTON COUNTY,
WEST VIRGINIA.

A
HAND BOOK OF INFORMATION

ON THE COUNTY FOR THE HOME AND HEALTH
SEEKER, AND THE CAPITALIST.

TREATING OF THIS RICH COUNTY, AS TO ITS SITUATION, SIZE, DI-
VISIONS, SURFACE, SOIL, CLIMATE, STREAMS
AND SCENERY.

ITS GEOLOGY, COAL AND COKE INDUSTRIES, IRON INDUSTRIES,
LIMESTONE, FIRE CLAY, BUILDING STONE, OIL AND NATURAL
GAS. ITS TIMBER—KINDS, MANUFACTURE, AND
LEADING LUMBER DEALERS AND MANUFAC-
TURERS. FARMING AND GRAZING
ADVANTAGES. FRUITS.

ITS SUMMER RESORTS, RAILROADS, COUNTY ROADS, TELEGRAPHS,
EXPRESS AND MAIL, CHURCHES, EDUCATION, HEALTH, PEO-
PLE, INDUCEMENTS, HOW TO REACH PRESTON
COUNTY, WITH SKETCHES OF TOWNS AND
THEIR COMPLETE DIRECTORIES.

.....
*Illustrated with Maps and Portraits of Leading Business
and Professional Men.*

BY

DUNCAN McRA,

Real Estate and Insurance Agent,

KINGWOOD, WEST VA.

Price 25 cents. Special Rates by the Quantity. First 5000 Edition.

COPYRIGHTED, SEPT. 9, 1891,

By Duncan McRa.

KINGWOOD, W. VA.:

THE JOURNAL PRINTING HOUSE.

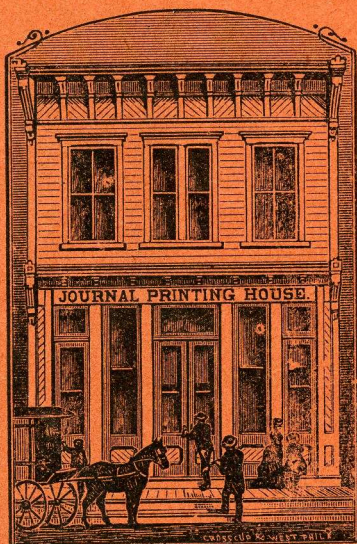
1891.

-- THE --

PRESTON COUNTY JOURNAL

KINGWOOD, - - WEST VA.

WHITE & HEERMANS, Publishers.



The Journal Building.

The Journal Job Office is the best equipped in the county. It is complete in every department. Good job presses, latest styles of type, and the best printers. We print anything, from a visiting card to a book.

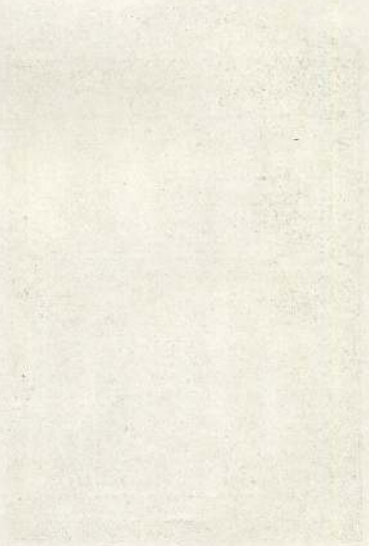
ESTABLISHED IN 1860
Four page weekly, published
Thursdays. The staunch
Republican party paper, al
ways at the front and alway
reliable. It is distinctly
home paper; pure, stron
and progressive. It give
the largest amount of town
and county news, employin
special correspondents a
every postoffice in Presto
county. It is the oldest
paper in the county, and i
the best advertising medium
Rates based on a guarantee
circulation of 1350, maile
on application. Subscrip
tion price \$1.50 per year in
variably in advance. Sen
for a sample copy.

1873

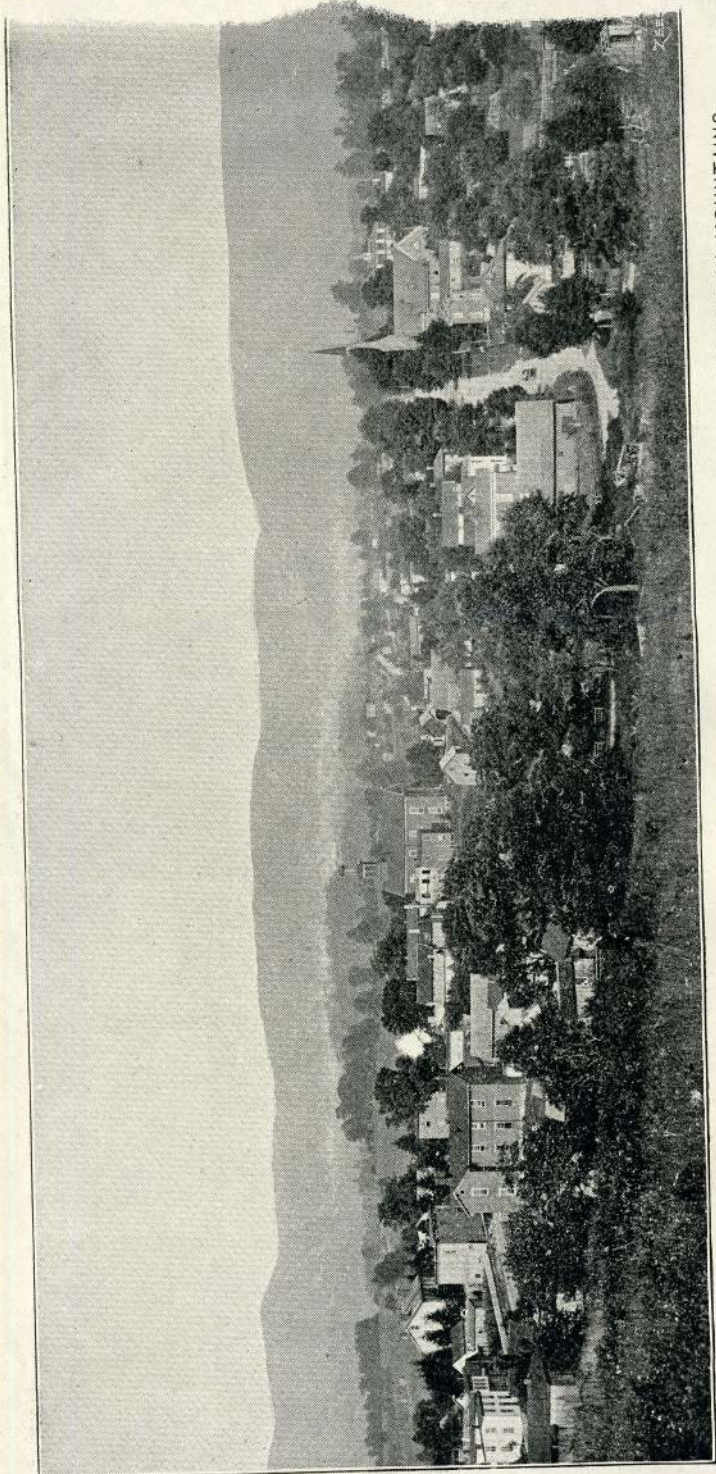
PRESTON COUNTY JOURNAL

1873

1873



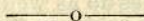
1873



A VIEW OF A PORTION OF THE TOWN OF KINGWOOD, LOOKING EAST TOWARD THE BRIERY MOUNTAINS.

Photographed by W. C. Shafer.

PROSPECTUS OF PRESTON COUNTY, WEST VA.



“ West Virginia! land of treasure
Buried in the silent earth—
Nature's gift in boundless measure,
Waiting him who calls it forth.
Be that wealth no longer lost,
Let thy sons with regal spirit,
Claim the kingdom they inherit,
Whatsoe'er that claim may cost.
Fairer than the fairest sky.”

—D. B. Purinton.

JAMES G. BLAINE'S ESTIMATE OF OUR WEALTH.

Blaine, in his Twenty Years of Congress, stated of the West Virginians when they were formed into a State: They enjoyed a climate as genial as that of the Italians who dwell on the slopes of the Appennines; they had forests more valuable than those that skirt the Upper Rhine; they had mineral wealth as great as that which had given England her precedence in the manufacturing progress of the world.

We the people of Preston county, are fortunate that everything contained in the language of the eloquent and distinguished American statesman is shared by us.

SITUATION AND EXTENT.

Preston is one of the important counties of the important State of West Virginia. It borders on two States—Pennsylvania and Maryland—and four counties of West Virginia—Tucker, Barbour, Taylor, and Monongalia. Preston county was formed from Monongalia in 1818. It has an area of 678 square miles, being one of the larger counties of the State. It extends along the full eastern Maryland line, a distance of thirty-six miles, and along the Mason and Dixon line twenty miles.

HOW DIVIDED.

It has several natural, besides its civil divisions. The Briery mountains divide the county into two parts, with the larger portion west. The mountains run from northeast to southwest, while Cheat river runs from southeast to northwest, cutting the county into nearer equal parts. East of Cheat river the civil divisions are: Grant, Pleasant, Portland and Union districts; west, are Reno, Lyon, Kingwood, and Valley. The Baltimore and Ohio Railroad runs from east to west, south of the centre.

SURFACE.

The county presents a variety of surface, from the extensive

district of well laying, to the mountainous. While there are some mountain sections too rough for agricultural purposes, the larger portion is hilly, but rich. Some places are level and known as "glades," but there is a variety of surface to suit for any purpose.

SOIL.

True, the kind and thickness of soil varies, but most of the county has a good, firm soil, that by proper care and treatment becomes rich. A large amount is naturally rich, and by the use of lime, which is accessible in nearly every part of the county, produces good crops of grain and grass.

CLIMATE.

All of that larger portion of the county has a climate as mild as other surrounding sections in the same latitude, and grain, grass, fruits and vegetables do as well, while the mountains, having a higher elevation, are colder in the winter and cool enough in the summer to be resorted to by many persons from the cities.

CHEAT RIVER AND OTHER STREAMS.

Cheat is the only river in the county, but some of the headwaters of the Youghiogheny and the Potomac also flow from the eastern part of the county. The roughest places in Cheat river are now being cleared out by the United States Government, so that logs can be floated down it without interruption. The other more important streams are: Sandy, Muddy, Buffalo, Big Sandy, Decker's and Three Forks creeks. All these furnish good water-power the entire year.

NATURAL SCENERY.

Cheat River, with its wild, romantic windings, cutting through the mountains, rising with majestic grandeur, covered with virgin forests and filled with valuable mineral wealth; beautiful hills sloping from them; valleys stretching between them, followed by silver streams of pure water; extensive plateaux in places; with pure air; and farms owned and occupied, and villages inhabited by a sober, intelligent, industrious and happy people, is certainly as much as one could desire to behold. Beaver Hole, with all its wild surroundings; the large caverns in lime on the precipitous mountain above; the noted "Sandstone Cave" a few miles away; the winding Cheat, with its tributaries, and the lofty mountain range; "Pine Swamp Knob," "Nettle Ridge" and Gregg's Knob," near Cranesville; "Switzer's Knob," near Eglon, and "Shaffer's Knob," near Aurora, all distinguishable at long distances; the expansive Valley district, and Terra Alta Glade; the "Frozen Mountain," near Rowlesburg; with beautiful hills in view everywhere; all furnish food for the painter and the lover of nature. "Kingwood Tunnel," near Tunnelton, "Buckhorn Wall" and "Tray Run Bridge," near Rowlesburg, on the Baltimore and Ohio Railroad, while not works of nature are great works of art.

GEOLOGY.

Under this important head we have the subjoined sections. While they in the main are correct and will be useful, yet the county has not been surveyed to give correct information. People could largely assist any survey by the government, a company, or an individual, by opening their veins of coal, ore and fireclay for inspection, and never till then can a good and accurate survey be made.

Following is nearly a complete formation of the rocks of Preston county:

	Feet.		Feet.
Sandstone.....	35	Freeport limestone.....	10
Pittsburg coal.....	15	Shales and sandstone.....	150
Top of Lower Coal Measure.		Coal, Lower Kittanning,	
Shales and sandstone.....	250	(Newburg shaft).....	6
Elk Lick coal (near Bruceton)	4	Sandstone and shales.....	75
Shales and sandstone.....	50	Bottom of Lower Coal Measures.	
Limestone.....	3	Conglomerate sandstone.....	350
Sandstone.....	50	Mauch Chunk Shales:	
Coal (Bakertown) at Mason-		Shales.....	370
town.....	7	Mountain Limestone.....	250
Sandstone.....	100	Limestone silicious.....	100
Coal (Brush creek).....	2	Pocona sandstone.....	575
Shales and sandstone.....	70	Catskill Red Beds.....	700
Coal, upper Freeport (Aus-		Chemung shales in county...1500	
ten, etc.).....	5		

The following is a section from near Beaver Hole:

	Feet.		Feet.
Shale.....	100	Shales and sandstone.....	150
Coal.....	4	Coal, Darlington,.....	2 to 3
Shale.....	65	Shales and sandstone.....	85
Mahoning sandstone.....	125	Great Conglomerate sand-	
Coal, Upper Freeport, from	6 to 11	stone.....	175 to 200
Shales.....	10	Mauch Chunk shale.....	300
Freeport limestone.....	12	Mountain limestone.....	100 to 150

A geological map at the clerk's office is a valuable assistant in studying the geology and elevation of the county.

ELEVATION.

Following is the elevation of a few places in the county from B. & O. engineers' reports:

	Feet.		Feet.
Terra Alta (depot).....	2550	East End Big Tunnel.....	1819
Cheat river bridge at Rowles-		Austen, tunnel.....	1554
burg.....	1292	Newburg.....	1215
Eighty Cut.....	1855	Independence.....	1157
West End Big Tunnel.....	1778	Kingwood, at court-house)....	1864
(Length of tunnel, 4132 feet.)			

COAL.

The coal veins in Preston county that are workable are about five in number and vary from three to 12 feet in thickness. The coal is bituminous, but cannel coal is found in places in the county several feet thick. Veins are open and worked for local use in nearly every part of the county west of the mountains. Besides, there are places that it is mined extensively, and coke made. Among these places are, Irondale, Newburg, Austen, West End, and Corinth. There are a number of fine coal fields in the county ready for development. Reno, Kingwood, Lyon, Valley, Portland and Pleasant districts have fine coal fields. There is coal in every district in the county. These fields are accessible at reasonable prices. The Baltimore and Ohio Railroad runs through a large field. The Tunnelton, Kingwood and Fairchance Railroad has good coal along its line. The different veins need not be traced out here. The 11-foot vein, or Pittsburg coal, is worked in the hills at Newburg. The sections given show where the other seams are that lie beneath. The Upper Freeport, perhaps, has more area and contains more coal than any other vein in the county, and furnishes a number of good coal fields for fuel, coke making, etc. The Lower Kittanning is a good vein and has an extensive area.

IRON ORE AND IRON INDUSTRIES.

Iron ore is found in many parts of the county in paying quantities. In the northern part of the county three furnaces have made a good quality of iron. They are not now worked. Ore was plentiful, but the lack of transporting facilities caused work at them to cease. Also, the furnace at Gladesville suspended only for that reason. The furnace at Irondale has been in operation for a number of years. Iron ore, lime, and coal are all abundant in the same hill and why cannot furnaces and foundries be as successfully operated here as anywhere? There is now a foundry at Irondale Furnace and one at Tunnelton. There are many good ore fields in the county that only await development, to add riches to the iron industries of the world.



GUS J. SHAFFER.

has been worked at Rowlesburg, where it is convenient for loading on the cars. Col. N. W. Fitzgerald is working a strata on his place near Terra Alta, which is also close to the railroad.

OIL.

Some borings were made years ago in the county for oil, but not to any great depth. There is good reason to believe that Preston county lies in the oil belt. Fellowsville, Evansville, Newburg, Masontown and Bruceton are very probable sites for investigation.

NATURAL GAS.

Constantly issues from Raccoon creek at Independence. There is strong probability that it would be found in paying quantities by boring.

KINDS OF WOOD.

The greatest amount of timber perhaps is white oak. There are forests, in places of spruce and hemlock. Poplar, chestnut, chestnut-oak, walnut, hickory, ash, cherry, linden, red oak, and other kinds are found. Large tracts of timber are yet untouched, and invite the manufacturer to convert them into lumber and useful and ornamental articles. Laurel, from the roots of which many small articles are made, is plenty in places.

LIMESTONE.

Is found in most parts of the county, in various thicknesses. The noted mountain lime is over 100 feet thick while there are various smaller seams. This is largely utilized in places by the farmers in enriching their lands, and will add much in making Preston a rich agricultural county.

FIRECLAY.

Is in good and abundant deposits in places. It is elsewhere noticed.

BUILDING STONE.

There are some of the best qualities of building stone. Ordinary building stone is found throughout the county. A quarry of a superior quality

is found near Terra Alta, which is also close to the railroad.

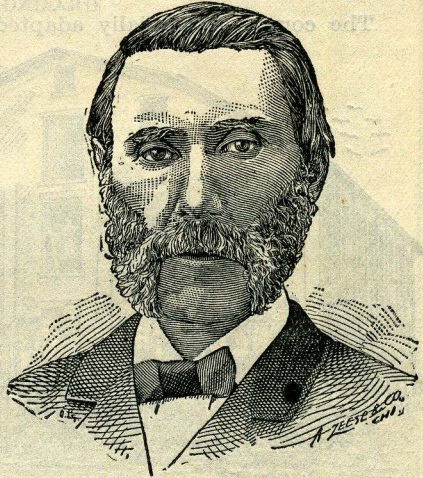
LUMBER DEALERS.

Among the many lumber dealers and manufacturers of lumber a few will be given special mention as larger dealers and manufacturers:

J. R. Smoot and Chas. Ellis, of Newburg; M. C. Gibson and A. J. Bonafield, of Tunnelton; Maj. U. N. Orr and Gus. J. Shaffer, of Kingwood; S. Rinard, of Cranesville; P. A. Coniff, S. Hinkle, and Geo. Hayes, of Rowlesburg.

FARMS AND FARMING.

While the lumber and coke manufacturing industries constitute a large part of the wealth and industry of the county, her agricultural interests are great. You can secure a farm of any size from a few acres to hundreds of acres; and while it is naturally true that a county so large as Preston, with mountains running through it, would have some rough and some poor land, yet the county generally has a good soil, and there are some well laying valleys and plateaux. The hillsides and mountain sides are rich, and produce good corn, wheat, oats, potatoes and buckwheat. The beautiful and productive valley in Valley District is elsewhere alluded to. There are thousands of acres of as well laying land as can be found. Our county offers special inducements to all—especially young men—who have not a great amount of means, and desire to secure a home and follow the quiet and peaceful occupation of farming, where you can have your own home and be independent of all. Land can be secured at reasonable rates. You can buy the land all improved, partly improved or in the woods; and where timbered, the timber will assist largely in paying for the land.



MAJ. U. N. ORR.

The best crops are grass, buckwheat, oats, potatoes and fruit. It is not uncommon for one farmer to raise 500 bushels of buckwheat in one year. One firm ships 150,000 pounds of buckwheat flour in one year. Cranesville, Glade Farms, Morgan's Glade, Bruceton, Clifton, Eglon, Brandonville, Evansville, Terra Alta, Painter's Mills, Masontown, Reedsville, and Gladesville, all have good farming and grazing sections surrounding them.

The farm products of the county in a year are quite great. Farm statistics estimated on a basis of 25 per cent. of increase on 1880—Census Report:

Number of farms, 2,750; improved land, 180,495 acres; value of farms, \$4,000,000; value of farm implements, \$110,000; cost of fences, \$40,000; cost of fertilizers, \$6,000.

Vegetable products:—

Barley, 100 bushels; buckwheat, 950,000 bushels; corn, 300,000 bushels; oats, 240,000 bushels; rye, 10,000 bushels; wheat, 80,000

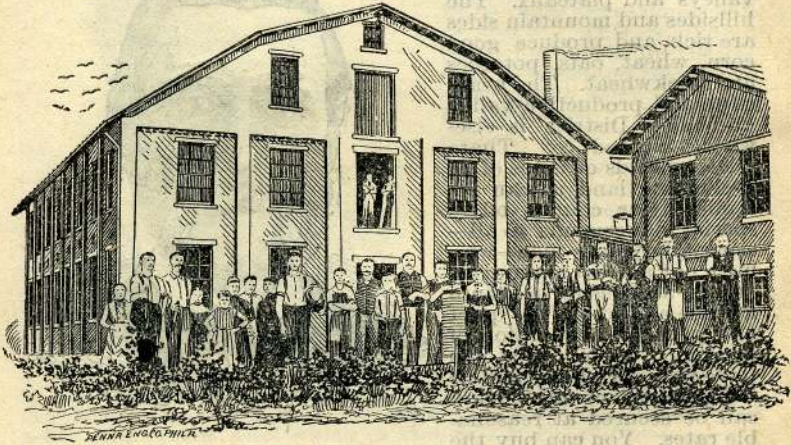
bushels; Irish potatoes, 70,000 bushels; sweet potatoes, 500 bushels; tobacco, 6000 pounds.

Estimated value of farm products, \$600,000.

Some of the leading farmers and stock raisers of the county are Elisha Thomas, Col. J. A. F. Martin, Col. Jas. W. Brown and Frank Barlow of Kingwood; Jonas Wolf and Henry Shaban, of Fellowsville; Jos. Guseman, B. G. Brown, Jacob Kelley and Henry Lyons, Gladesville; John Snider and Geo. Hartman, Tunnelton; Simeon Mattingly, Howesville; Jehu Jenkins and Jos. N. Miller, Morgan's Glade; John H. Feather, Lucian Smith and J. G. Arnold, Bruce-ton; J. J. Guseman, Stephen Guthrie and Elisha Hartman, Hazelton; Lloyd Lantz, Maj. Stemple, Mr. Beechy, and Allen Forman, Aurora; Michael Feather and J. W. Feather, Cranesville; Richard Loar, Wm. Loar, Wm. Overfield, Gay Fairfax, J. W. Guseman, Wm. H. Manear, San. Watson, David Graham, Geo. Spurgin and Enos and Geo. Ashburn, Reedsville.

GRAZING.

The county is specially adapted to raising cattle and sheep.



THE TERRA ALTA WOOLEN MILLS.

The land is well adapted to the usual grasses—timothy and clover. The grass is of such quality that cattle and sheep will fatten on it alone. The quality of the grass, the purity of the air and the abundance of good water causes the best beef and mutton to be produced. Good horses are bred. Plenty of good grazing land at reasonable prices.

Live Stock, etc., 1890:—

Number of horses 4,535; cattle, 12,879; sheep, 9,408; hogs, 1,020; wool, 95,000 pounds; butter, 454,164 pounds. Value of live stock, \$700,000.

THE PRESTON COUNTY FARMERS' ASSOCIATION.

The Preston County Farmers' Association holds its meetings at Kingwood. This Association is composed of the farmers, wool-growers and stock breeders of the county. Many farmers of the county are live, active and well up in matters pertaining to their chosen occupation.

FRUITS.

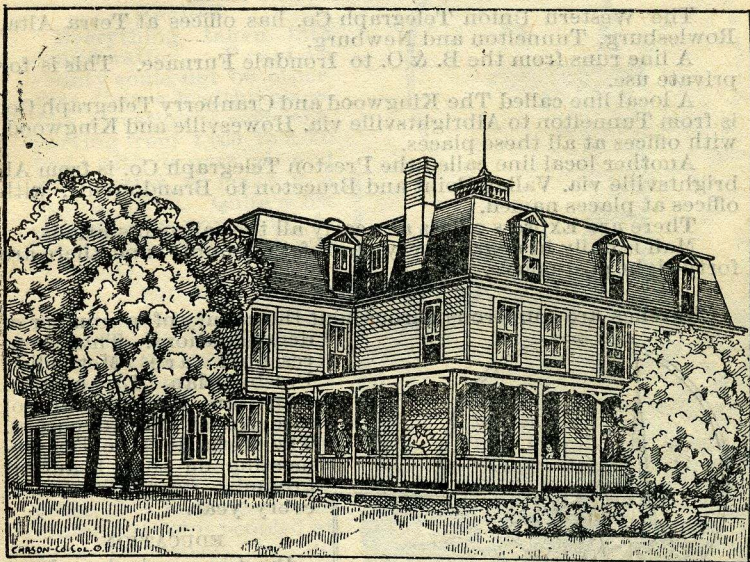
Apples, cherries, grapes, pears, quinces, plums, and berries of

various kinds, of the best quality are produced. Orchard products (1880) 30,000 bushels.

A GREAT ENTERPRISE.

A great enterprise of the county is the hotels prepared for those who come from the cities to seek refuge and comfort in the cool breezes along the mountains during the summer. Among them are the Hotel Gordon at Kingwood, owned by Senator W. G. Worley, F. M. Thomas, proprietor; The Aurora House, at Aurora, by Jas. H. Shaffer; others at Aurora by J. T. Lantz, Mr. Wilt, and Mr. Shuttlesworth; an extensive one at Brookside, by Judge Vale; one at Eglon, by Mr. Bush; and a new one in course of erection at Terra Alta.

These hotels are all well managed, and are generally full to their utmost capacity during the hot season. It would certainly be



THE HOTEL GORDON.

very paying to have quite a number such enterprises. Kingwood, Terra Alta, Aurora, Eglon, Cranesville, Rowlesburg, Bruceton and Masontown are delightful situations, and ground could be secured at any of these places upon which to build.

RAILROADS.

The Baltimore and Ohio Railroad, one of the oldest and best lines of road in the country passes through the county as before described. It is the great means of thoroughfare of the county. Nearly all the traffic and travel of the county is by means of the B. & O. R. R. It brings us our goods and carries our coal, coke, timber, stock, etc., away. While it does so much for us, it might be a greater aid to us by sending out branches into our rich fields of mineral and timber.

The Tunnelton, Kingwood and Fairhance Railroad runs from

Tunnelton to Kingwood, a distance of 11 miles. All the stockholders now live in the county. The road is a narrow guage, but it is a great convenience to the traveling public, and has scarcely been able to carry all its freight since it has been built. The company now has three engines, two coaches, and about forty-five freight cars. The passenger train makes two round trips daily. (See map of road on cover page.)

ROADS.

The county has roads much above the average of the surrounding country. There are several good pikes through the principal sections of the county, and there is a net work of good county roads in every section. It is the sentiment of the people to make improvements and be up with the times.

TELEGRAPH, EXPRESS AND MAIL.

The Western Union Telegraph Co. has offices at Terra Alta, Rowlesburg, Tunnelton and Newburg.

A line runs from the B. & O. to Irondale Furnace. This is for private use.

A local line called The Kingwood and Cranberry Telegraph Co. is from Tunnelton to Albrightsville via. Howesville and Kingwood, with offices at all these places.

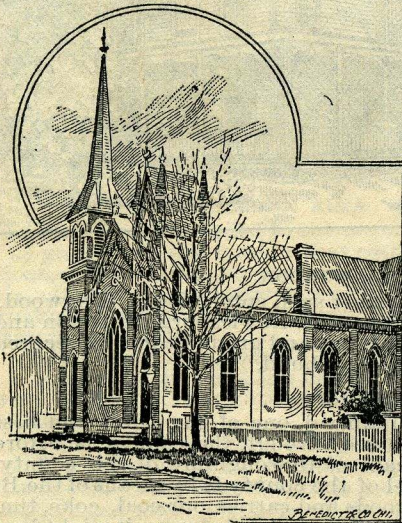
Another local line called the Preston Telegraph Co. is from Albrightsville via. Valley Point and Bruceton to Brandonville, with offices at places named.

There are Express offices at nearly all the railroad stations.

Mail is daily in nearly every part of the county, and there are forty-eight post-offices.

CHURCHES.

Churches are numerous throughout the county of a number of denominations. Those represented are Methodist, Presbyterian, Lutheran, Christian, Baptist, Minnionite, Amish and Adventists. The Methodists hold camp-meeting on their beautiful grounds near Tunnelton every year.



M. E. CHURCH, KINGWOOD, W. VA.

EDUCATION.

Preston county has about 160 schools dotted in every part of the county. Through the influence of some good educators that have been at the head of the schools of the county, Preston has a corps of teachers, we believe, much above the average of the state. Efforts are being made as the system shows itself more worthy, to increase the number of school months and raise the standard of the profession of teaching. None of the state school institutions are located in the county, but special terms of school for the teachers and those seeking higher educa-

tion, are held at various places in the county every summer, and a number of our best young men and young women are away at higher institutions of learning all the time. General intelligence prevails among the people. A large amount of money goes out of the county every year for the purpose of giving her sons and daughters a higher education, and we believe an academy or college of a permanent nature, and running during the summer, making a specialty of preparing teachers for their work, would be a good thing for the county and an advantage to our young men and women. We have several pleasant towns well suited for an institution of this kind.

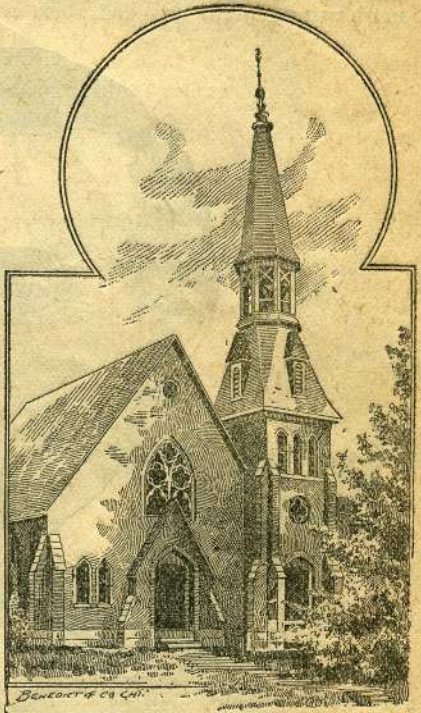
Many persons raised in this county are now holding high positions in life in every part of the country.

HEALTH.

Everything taken into consideration, Preston county could not be otherwise than a healthy place. The elevation is sufficient, varying from 1,000 to 3,000 feet, with its pure air and good water, to make it a healthy place. Quite a list of people are now living in the county above the age of eighty.

PEOPLE.

The population is composed chiefly of native citizens. In the northern part of the county, in Grant district, many are settlers from Pennsylvania, and there are a number of Germans from that State. They are good citizens, intelligent and generous. Union district is peopled almost exclusively by descendants of Germans from Pennsylvania. Their thrift and enterprise is elsewhere alluded to. There are several German and Irish settlements. People of the various nationalities are found in the county. Valley, Kingwood, Pleasant, Portland, Lyon and Reno districts are peopled largely by native born citizens. The people throughout the county are noted for their hospitality, and persons coming among them would certainly be kindly received, and those coming will be favored by having our citizens for their neighbors.



PRESBYTERIAN CHURCH, KINGWOOD, WEST VA.

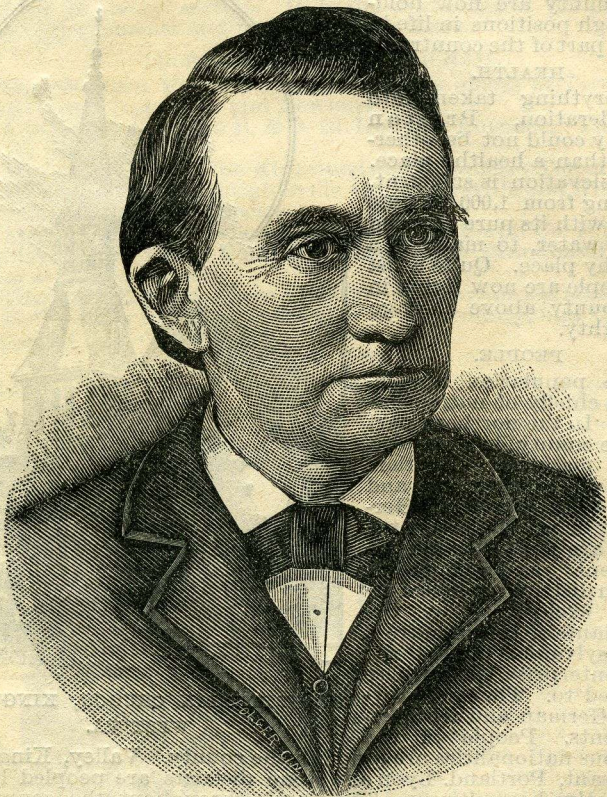
Population of County by Districts—Census 1890.

Grant,.....	2,193	Kingwood,.....	2,315
Lyon,.....	3,363	Pleasant,.....	1,891
Portland,.....	3,263	Reno,.....	3,565
Union,.....	2,135	Valley,.....	1,629

<i>Towns.</i>			
Brandonville,.....	82	Independence,.....	273
Newburg,.....	778	Austen,.....	269
Terra Alta,.....	443	Rowlesburg,.....	560
Kingwood not reported in census of 1890—about.....			500

INDUCEMENTS.

It has been stated that "the coal fields of West Virginia are worth more than the gold of California," and Preston county has her share of that wealth. What more does a people want, or what more can people be favored, than we? Preston county is large,



HON. JOSEPH T. HOKE,
 JUDGE THIRD JUDICIAL CIRCUIT.
 Residence, Kingwood, West Va.

and affords nearly every variety of enterprise. We have healthful air and pure water. We have ore for the furnace, coal for the many uses to which it is applied, sandstone and timber for building, fire clay for brick, soil and surface for every purpose of agri-

culture and grazing, and many sites for manufactories unoccupied, and room for the homes of thousands.

These are some of the inducements we have to offer. We have shown what we actually have. While books were consulted, the information has been gathered largely from observation and consultation with leading business men of the county.

We need more investments in summer hotels. We need investments to develop our timber, coal, iron ore, fire clay, and sandstone, and railroads to

carry our products into market. We need more companies to mine our coal, and thousands of ovens to convert it into coke. We need more furnaces, well managed, to convert the ore that lies dormant in our hills into iron, and foundries and other industries to convert our iron into useful articles. While we have many industries in wood, too much of it goes away in too raw a state. Since we have the wood of nearly all kinds, and the fuel and facilities to manufacture, why

can we not make all useful and ornamental wooden articles here as well as elsewhere? We need more grain and more cattle and sheep raised upon our farms, and more farmers to develop our thousands of acres yet untouched.

For these rural reasons we invite the investor and the many seeking homes in rural districts. Homes can be secured on reasonable terms. Improved or part improved lands can be secured. We respectfully invite the attention of all to what our county offers. We invite any good people and capital to come among us.

Further information not herein given will be gladly given by Duncan McRa, Real Estate Agent at Kingwood, by whom this description has been prepared, or by any of the business men here-in represented.



NEIL J. FORTNEY.

PROSECUTING ATTORNEY.

OFFICIAL DIRECTORY.



Following is the State, County and District Official Directory :

STATE OFFICIALS

Governor—A. Brooks Fleming. Secretary of State—W. H. Ohley.
Auditor—Patrick F. Duffy
Treasurer—Wm. T. Thompson. Attorney General—Alfred Caldwell.
Supt. Schools—B. S. Morgan.

SUPREME COURT OF APPEALS.

Daniel B. Lucas, Prest. Henry Brannon,
J. W. English, Homer H. Holt.
Convenes at Charleston, Wheeling and Charlestown.

UNITED STATES SENATORS.

C. J. Faulkner, Martinsburg, John E. Kenna, Charleston.

MEMBER OF CONGRESS.

Second District—William L. Wilson, Charlestown.

STATE SENATORS—ELEVENTH DISTRICT..

William G. Worley, Kingwood, Preston county,
Alpheus Garrison, Monongalia county.

THE CIRCUIT COURT.

Judge—Joseph T. Hoke, Kingwood, Preston county.
Commissioners in Chancery.

P. J. Crogan, D. M. Wotring, Henry Clay Hyde and Neil J. Fortney.

Receiver of the Court,

Col. James W. Brown.

COUNTY OFFICIALS.

Commissioners County Court.

Grant District, S. F. Conner, Pres. Pleasant, Ben. A. Conner.
Portland, E. D. Benson. Union, Page R. McCrum.
Reno, Moses T. Sinclair. Lyon, Reason A. Pell.
Valley, Mason Watson. Kingwood, Leroy Shaw.

COURTS CONVENE.

Circuit Court—March 22, September 1, and December 11.
County Court—First Monday in January, April, July and October.

HOUSE OF DELEGATES.

East Side—Dr. M. S. Bryte, Bruceton.
West Side—Amos Hartley, Masontown.

Sheriff—Daniel R. Jackson.

Deputies—J. K. Monroe, Kingwood, Valley and Pleasant; I. W. Criss, Lyon; J. O. Lantz, Union; R. E. Hanway, Reno; E. E. Cuppelt, Grant; Dorsey Forman, Portland.
Clerk Circuit Court—John W. Watson.

Clerk County Court—J. Ami Martin ; Deputy, Geo. A. Walls.
 Prosecuting Attorney—Neil J. Fortney.
 County Surveyor—A. F. McMillen.
 Superintendent of Schools—Wm. G. Conley.
 Assessor—East Side, Gabriel Pulliam.
 Assessor—West Side, John S. Perkins.

Magistrates.

Kingwood, J. M. Godwin, Simeon Mattingly.	Lyon, J. McGee, D. J. Gibson
Valley, D. C. Zinn, J. M. Strahin.	Reno, H. H. Wheeler, T. M. Summers.
Portland, John W. Hill, A. G. Mason.	Union, Jesse W. Shaffer, Julius Scherr.
Grant, W. H. McGibbons, Alpha Hagans.	Pleasant, Levi F. Miller, D. H. Martin.

Constables.

Kingwood District—J. L. Stone, Joseph T. Rhodes.	Valley—A. J. DeBerry, E. Dixon.
Reno—B. F. Woodward, S. W. Bowman.	Lyon—I. W. Criss, W. B. Taylor.
Union—Lloyd C. Shaffer, Geo. Geissman.	Portland—W. A. McGinnis, E. C. Martin.
	Pleasant—Jas. P. Fullmer.
	Grant—William T. D. Miller.

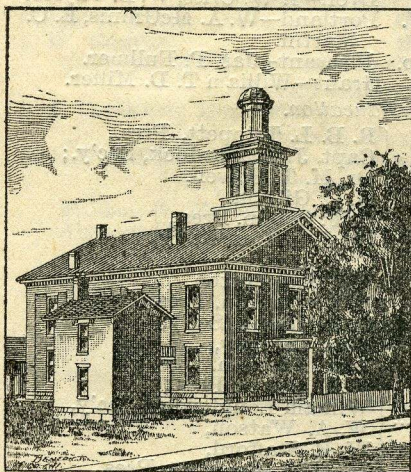
Boards of Education.

Kingwood District,.....	{ R. B. L. Trippett, Pres., Capt. J. E. Murdock, Sec'y.; Dr. M. T. Powell, M. C. Gibson.
Valley,.....	{ B. F. Cobun, Pres., Dr. J. A. Cox, Sec'y, J. S. Loar, Nicholas Posten.
Lyon,.....	{ T. M. Clayton, Pres. D. J. Gibson, Sec'y, Geo. C. Shaw, Isaac Jackson.
Reno,.....	{ J. N. Baker, Pres., William Loughridge, Sec'y, W. A. Watson, W. E. Stafford,
Portland,.....	{ Jacob J. Guseman, Pres., W. M. Shaffer, Sec'y, Samuel B. Freeland, C. C. Lee.
Union,.....	{ Julius Scherr, Pres., Lloyd Shaffer, Sec'y, E. P. King, Charles E. Lawton.
Pleasant,.....	{ J. J. Martin, Pres., W. H. Ringer, Sec'y, Wm. C. Ringer. I. W. Hartman.
Grant,.....	{ B. F. Huggins, Pres., J. H. Feather, Sec'y, W. M. Wolfe, Asa K. Frazee.

SKETCHES OF SECTIONS, TOWNS, ENTERPRISES, BUSINESS AND PROFESSIONAL MEN, WITH TOWN DIRECTORIES.

KINGWOOD.

We give as a frontispiece to our work a beautiful picture showing part of the town of Kingwood. It was incorporated in 1853. It is the county seat and is situated ten miles north of the B. & O. R. R., and connected with it by the T. K. & F. R. R. It is two miles from Cheat River, and within beautiful view of the Briery Mountains. It is about 2,000 feet high. A more beautiful and healthful location could not easily be found, and the truth of the statement is testified to by all strangers who visit it. It has long justly held the reputation of a town of neatness, cleanliness, wealth and general intelligence of its people.



COURT HOUSE, AT KINGWOOD.

It has good churches and Sunday schools, and a good public school. The Methodist church cost \$10,000 and the Presbyterian \$6,000. Its school building, a two story brick, cost \$8,000. There is also a colored school and a colored M. E. organization. The court house is a good two story brick, 70x47 feet; also, a good jail built of brick. The County Home, or home for those who are not able to support themselves, is near the town. It is at present kept by Wm. H. Brand.

THE BANK OF KINGWOOD.

The business prosperity of a community can usually be measured by the number and stability of its financial institutions. Up to the year 1865 the transmission of money by the business men of Preston county had been made through the mails, by express, and by private conveyance. The growth of business incident to the closing of the war rendered it absolutely necessary that a bank should lend its help toward the business development that was taking place throughout the county, so the Hon. J. C. McGrew, the late Hon. Wm. G. Brown, C. M. Bishop, Esq., John S. Murdock, Esq., Martin L. Shaffer, F. Heermans, and a few other business men organized The National Bank of Kingwood, in November, 1865, with a capital paid in of \$100,000.

A few years later the capital was increased to \$125,000 and has remained at that since.

During these twenty-six years the funds of the bank have been liberally loaned to the business men and stock growers of the county, and they have also found it a safe depository for their funds when not using them. The bank's business has grown with

the county's growth, and it is proper to state that it is one of the most carefully managed banks of the State. Its present management consists of the following board of directors: Hon. J. C. McGrew, Hon. C. M. Bishop, John S. Murdock, D. Y. Morris, J. W. Parks, W. G. Brown and John M. Crane. The officers of the bank are: J. C. McGrew, President; C. M. Bishop, Vice President; Francis Heermans, Cashier; and J. W. Parks, Assistant Cashier. It has set aside a good surplus which adds to its strength and ability to accommodate the business men of the county, many of whom make grateful mention of the assistance rendered them in the use of its funds in their business.

THE M'GREW BUILDING.

The accompanying cut is a good representation of the McGrew Building, in Kingwood. It is occupied by The Bank of Kingwood; Jackson & Posten, general merchants, who have an exten-



THE M'GREW BUILDING.

sive second floor, 23x50 feet, is occupied by Wm. G. Brown and Henry Clay Hyde, lawyers. This is said to be the most commodious and best equipped law office in the state. The large library, extending from floor to ceiling and from one end of the office to the other, is certainly one of the largest and most valuable private collection of law books found anywhere outside the cities. The latest reports, text books and law periodicals are purchased in order to be abreast of the times and to meet the demands of the extensive business carried on in this office. The office is provided with a large fire-proof safe for the protection of clients' papers in case of fire. The entire building is heated by steam.

Among the more beautiful residences in Kingwood are those of the Hon. J. C. McGrew, Wm. G. Brown, Maj. U. N. Orr, John M. Crane, J. W. Parks, Jas. A. Brown, L. M. Albright, J. Ami Martin, D. M. Wotring, W. F. Manear, Joseph Jackson, Dr. J. H. Manown, C. M. Bishop, Dr. W. S. Martin, N. J. Fortney, J. Alden Eaton, J. A. Wardwell, Mrs. Morgan, Wait Graham, C. W. Fawcett, P. J. Crogan, H. C. Hyde, M. H. Murdock, W. H. Murdock, D. Y. Morris, J. H. Brown, J. T. Neff, J. L. Stone, Dr. S. A. Pratt, Peter Voltz, C. E. Vickery, Col. R. W. Monroe, the M. E. Parsonage, J. W. Watson, Mrs. J. H. Carroll, Elisha Thomas, A. B. Menear, Mrs. Mattie Parks, Ad. W. Albright.

There are four hotels in the town. One of them, the Hotel Gordon, is also a summer hotel. It is especially fitted up for the accommodation of summer guests. It is most beautifully located, and artistically arranged. Its neat and well-ventilated rooms, its large and elegant parlors, and its wide verandas, all invite within. From its observatory one of the finest views of the surrounding country can be had. Its ample and beautiful grounds give it a delightful appearance. It can accommodate about 100 guests.

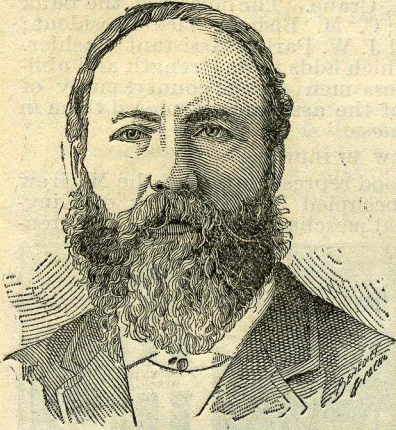
J. M. Crane is prepared to accommodate about forty summer guests at his beautiful home.

Peter R. Smith is making large additions to the Exchange Hotel, at the new site of the hotel.

Another hotel will soon be opened by Benoni Jordan.

In connection with the merchants of Kingwood, we begin with the able firm of Shaffer, Brown & Co., and also give mention of the manager of the firm, Gus J. Shaffer, a good cut of whom

appears on page 6. Mr. Shaffer stands among the foremost lumber men of the county, having been engaged in that business for twenty years. In point of experience he stands second to Major U. N. Orr. In 1888 he removed from Tunnelton to Kingwood and engaged in merchandising in connection with the lumber business, associating himself with Messrs. Wm. G. Brown, A. J. Bonafield and M. L. Shaffer, under the name and style of Shaffer, Brown & Co., making at once a firm second to none in the county in point of business qualifications and financial ability. The new firm, in addition to general

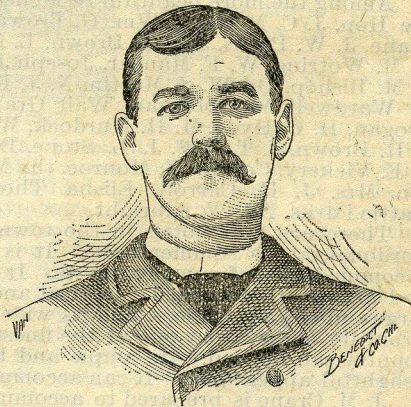


CAPT. JAS. E. MURDOCK.

merchandise, handles grain, feed, fertilizers, agricultural implements, etc. They not only manufacture lumber, shooks, staves, ties, etc., but buy largely from other manufacturers, and today their shipments more than double that of any other shipper doing business over the T. K. & F. Railroad. The business under the management of Mr. Shaffer has succeeded far beyond their expectations, and while their business at Kingwood was by them regarded as an experiment, it is today one of the permanent industries of the town and surrounding country.

The reliable firm of Jackson & Posten have been in business in Kingwood for a number of years. Mr. Jackson has perhaps been in the business longer than any other man in the county.

Capt. James E. Murdock, grocer and confectioner, is one of the substantial men of the county. He was captain of Co. A, Seventh W. Va. Inf. He has been engaged in merchandising, was postmaster at Kingwood four years, and has for several years been doing a nice business in the grocery and confectionery business in Kingwood. He keeps a weather station at his grocery.



ROY C. STONE.

Roy C. Stone, the only music dealer in the county, has resided in Kingwood all his life. He is 29 years old, and has been in the music business continuously for eight years. He has a large and constantly growing trade



W. SCOTT GARNER.



WM. G. CONLEY,
Superintendent of Schools.



Drug Store of R. McMillen, Kingwood.



GEORGE A. HERRING.



J. AMI MARTIN,
Clerk County Court.



JULIUS K. MONROE.

over the state and has control of territory for several first class instruments, among which are the Decker Bros., Fischer and New England Pianos, and the Newman Bros., Sterling and Bridgeport Organs. He has several agents in different parts of the state and has made a success of his business, which he has always conducted "on the square."

L. M. Albright, John H. Brown and J. W. Blaker are reliable merchants and each have been in business for several years. They are all doing a good business.

The two firms of Beavers & Fawcett, and Feather & Werner are both composed of young men. William A. Beavers and J. W. Fawcett compose the former and Marshall Feather and A. A. Werner the latter.

There are few better Merchant Tailors than Peter Voltz, and Miss Letitia Parks makes dresses at her Dressmaking Establishment for various parts of the country, far and near.

C. W. Fawcett keeps a good line of Boots and Shoes.

W. H. Murdock, deals in General Hardware, handles Steel Ranges, Stoves and Linings, White Lead, Oil, Paints, Pumps and Fixtures, Cutlery and Barbed Wire, Wagons, Buggies, Carts, and all kinds of Farming Implements, including Buck-eye Mower, Hay Rakes, Plows, Drills, Harrows, Cultivators and Sporting Goods.

Wm. F. Menear, deals in Ranges, Stoves, Stove Fixtures and Linings, Tinware, Wire Goods, Oils, Lead, Felt Roofing, etc. Does Roofing and Spouting, and repairs same.

H. C. Flythe, General Furniture Dealer, can furnish you with Parlor Furniture, Chamber Suits, Lounges, Bedsteads, Chairs, Tables, Carpets, Curtains, Frames, etc. He is also Undertaker, and deals in all kinds of Undertaker's Goods.

W. M. O. Dawson keeps at his Stationery Store, the nicest line of the following: Stationery, Books, School Supplies, Periodicals, Games, Toys, Lamps, Artists' Materials, Perfumery, Fine Glass China Ware, etc.

R. McMillen, M. D., of Kingwood, has been a successful practitioner for five years. He is a graduate of the College of Physicians and Surgeons of Baltimore, Md., of Bellvue Hospital Medical College of New York city, and took special courses in Chemistry, and the Diseases of Women. Doctor keeps a Drug Store in Kingwood, a cut of which we present. He keeps a good stock of Drugs, Patent Medicines, Toilet Articles, etc. Prescriptions carefully compounded. (See cut of building.)

David Melancthon Wotring was born in this county on May 23d, 1853. From early boyhood worked on a farm during the sum-



D. R. JACKSON,
SHERIFF.

mer, receiving little or no schooling until after the inauguration of the free school system. After free schools went into operation, attended them during the winter terms and still continued to work on farm during summer.



D. M. WOTRING.

began the study of law under the tuition of Hon. J. T. Hoke, was admitted to the bar in November, 1888, and is devoted to his profession, which he has practiced since that time.

Politically he is, and always has been, an ardent and zealous Republican, having served for many years as a member of the County Committee for Union district. In 1888 he was made Secretary of the Executive Committee, and elected Chairman of the County Committee in 1890, which position he now holds.

The accompanying cut is made from a photograph of Henry Clay Hyde, of Kingwood, who gives the following facts concerning himself: "Born in Preston county, studied law and was admitted to the Kingwood Bar at the age of twenty-four; have been in active practice at Kingwood since Nov., 1883."

Kingwood has a good Silver Cornet Band.

The Woman's Foreign Missionary Society has an Auxiliary Society at Kingwood. Also, the Epworth League has an organization.

The town has a branch Building and Loan Association.

The American Bible Society has an Auxillary at Kingwood, also, at Newburg, Rowlesburg and Terra Alta.

Began to teach school in winter of 1871-2 and subsequently—but not continuously—taught twelve terms, eleven of which were in native (Union) district. Attended the Peabody School at Aurora during summer of 1875; under the tuition of F. V. N. Painter, and in 1876 under that of Prof. H. B. Bailey.

Elected Justice of the Peace for Union district in 1884 and served one year. Resigned that position to accept appointment to that of County Surveyor of lands, to fill vacancy caused by the death of Col. A. C. Baker in 1885.

Removed to Kingwood in the latter part of 1886, and



HENRY CLAY HYDE.

Dr. R. B. L. Trippett graduated at the Louisville Medical College in the spring of 1872, having attended lectures at Jefferson Medical College, Philadelphia, two years prior; he holds certificate from Blockley Hospital, Philadelphia, the largest and best equipped hospital in the United States.

He is one of the Health officers of the town of Kingwood, President of the County Board of Health, a member of the Medical Society of the State of West Virginia, and of the American Medi-



Respectfully yours,

R. B. L. Trippett

cal Association, Secretary of the Board of Examining Surgeons for Pensions, and President of the Board of Education for his district.

He is enterprising in business, enjoying a lucrative and busy practice; is subscriber and contributor to several medical journals as well as the daily and weekly press. His medical library is second to none in the county. He is one of the original projectors of the K. & C. Telegraph Co., and owns about one-fourth of the stock.

He is Past Master in Masonry; Past Chief in Good Templars; and belongs to all the branches of Odd Fellowship, Subordinate Encampment, Canton (of which he is Major) and the D. of R. (of which he is a P. G.)

The Happy-go-Lucky Club owns a boat house and boats, on Cheat River.

There are two newspapers printed in Kingwood, The Preston County Journal, the Republican paper, and the West Virginia Argus, the Democratic. For note of Journal see 1st inside cover page.

The West Virginia Argus is a well printed, newsy, local paper of four pages of seven columns each. It is all printed at home. The Argus was first issued in 1877. The following persons have edited it since its first publication: H. C. Hyde, H. W. McCafferty, John Barton Payne, George Purcell, Lee Kussart, W. J. Lavelle and J. Ed. Kildow, and its present editor and proprietor, J. Slidell Brown. Mr. Brown is a native of the county. He bought the paper and took editorial charge about two years ago. The paper has grown under his management in the number of its subscribers, the amount of news contained, and the quality of job work done. The subscription price is \$1.50 a year.

Wm. G. Brown, one of the leading lawyers of the Kingwood Bar, son of the late Hon. Wm. G. Brown, was born in Kingwood, W. Va.,



WM. G. BROWN.

in 1856. He was liberally educated at the West Virginia University, being graduated from that institution with the class of 1877. He read law with his father and was admitted to the bar in 1879, since which time he has maintained a position of prominence at the bar and in politics. He has been frequently urged by his friends to become a candidate for congressional honors, but he has as often declined. Mr. Brown is a man of large private means, but this does not detract from his duties as a lawyer in active practice, or as a student; for those who have met him, either in a business way or socially, have found him to be one of the safest and best informed members of the Kingwood Bar.

P. J. Crogan, a fine picture of whom appears, was born in Preston county, near Newburg, in 1856. He taught school successfully for seven terms, and then read law with the Hon. J. W. Mason, present Commissioner of Internal Revenue. As soon as he was admitted to the bar, he at once began a practice that has grown,



Edw. S. Elliott.

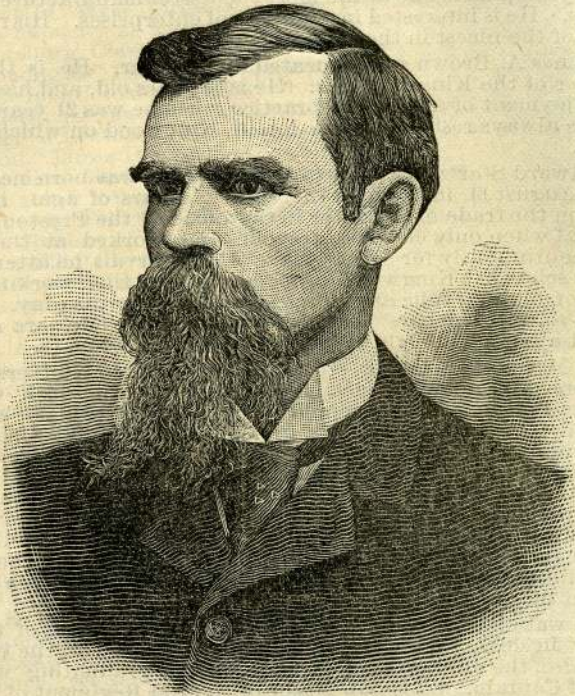


P. J. CROGAN,

Attorney at Law.

till now he stands second to no member of the Kingwood bar, and perhaps has few superiors in his profession in the state. He has held important political positions, but aspires to none. He is wholly devoted to his chosen profession, is commanding in appearance, sociable, generous, and industrious, which makes him an able lawyer. He is a member of the Board of Directors of the State Penitentiary. He was elected Presidential Elector, on the Democratic ticket, from the Second Congressional District of West Virginia in the election of 1888.

William Gordon Worley was born in Greene county Pennsylvania. He graduated at Waynesburg College in 1872, read law with



HON. WILLIAM G. WORLEY.

Berkshire and Sturgiss, of Morgantown, and was admitted to the bar in 1874. During this year he came to Preston county. He was elected Prosecuting Attorney in 1876 and served one term. In 1888 he was elected State Senator for this district. He is a member of the Board of Directors of the Moundsville Mining and Manufacturing Company, is counsel for the company, and is also a member of the Board of Directors of the State Reform School. Few persons have done more for the county by aiding public enterprises, inducing immigration, and encouraging the establishment of such enterprises than Mr. Worley.

We give on page 13, a good portrait of Neil J. Fortney, Prosecuting Attorney, although the cut was made a few years ago. He

was born near Independence, Preston County; was admitted to the bar in 1880, and was elected to the office he now holds the same year, and has been re-elected at each term since. He is an able and successful prosecutor, and at the same time has a liberal civil practice. In addition to his legal attainments, he has considerable artistic and inventive genius. Mr. Fortney is of the most genial, humorous, and generous disposition.

Maj. U. N. Orr, a picture of whom appears on page 7, is one of the firm business men of the county. He has served the county in the legislature, of which body he was an able and prudent member. He has been engaged in the manufacture of lumber for a number of years, and is one of the most successful manufacturers in the county. He is interested in a number of enterprises. His residence is one of the nicest in the town of Kingwood.

James A. Brown was educated for the bar. He is the senior member of the Kingwood bar. He is 54 years old, and has been in the enjoyment of a lucrative practice since he was 21 years of age. He has always resided on the lot in Kingwood on which he was raised.

Edward Startzman Elliott, A. B., LL. B., was born near Kingwood August 14, 1863, and is therefore 28 years of age. He entered upon the trade of a printer in the office of the Preston County Journal when only eleven years old, and worked at the case almost continuously for seven years. At intervals he attended the public schools in Kingwood, a portion of the time working at his trade of nights, while attending school during the day. He obtained a No. 1 teachers' certificate when only 15 years old, and taught a school at Eighty Cut, in this county, when 18.

In March, 1882, he entered the West Virginia University, but was forced by a lack of means to leave it in June, 1883, when he went to Baltimore and accepted the position of private secretary to Ex-U. S. Senator H. G. Davis, President of the W. Va. C. Railroad. While here during 1883 and 1884, he took a special course at Bryant, Stratton & Sadler's Business College. Resigning his position in September, 1884, he returned to the University and was graduated from the classical course in 1887. Mr. Elliott's standing in college was perhaps as high as that of any man that the University ever turned out, and at graduation he represented the Columbian Literary Society in the inter-society contest and won the first prize in the debate.

He was also graduated from the Law Department of the University in 1887, and was immediately admitted to the bar. He took, also, the military course as a Cadet—graduating with the rank of Captain, and is now Major of the 2nd Regiment of W. Va., Uniform Rank, Knights of Pythias, in which order he is also a Past Chancellor.

Prior to his graduation, in 1885, he taught a successful normal school for teachers at Kingwood, and another at Masontown in 1887. The day of his graduation he was elected by the Board of Regents of the West Virginia University instructor of Latin and Greek in the Preparatory Department of the University, which position he filled satisfactorily for two years, when he resigned to follow the law. It was during these two years that he organized and managed the State Normal Institute, a training school for teachers with a large faculty of specialists as instructors, which held successful sessions at Morgantown during the summers of 1888 and 1889. In 1888 he was the editor of the "West Virginia University Daily."

After leaving the University, he took a special course in law at the University of Virginia, under Dr. John B. Minor, and then went to Columbia College, New York City, and took the regular two-years' law course under the wardenship of the venerable Theodore W. Dwight, and was for a year in the law offices of the eminent firm of Anderson & Howland, in Wall street. Returning to his native county, he formed a law partnership with D. M. Wotring, Esq., where he has since been engaged in the practice of his profession so successfully that it is believed that his firm has the largest law practice in the county.

In October, 1890, the Attorney-General of the United States appointed Mr. Elliott Assistant United States Attorney for the District of West Virginia, which position he still holds, and in which capacity he attends the United States Courts at Wheeling, Parkersburg, Clarksburg and Martinsburg, in this State.

Among Mr. Elliott's public addresses which have been printed may be mentioned a paper read before the West Virginia State Teachers' Association in 1888, on "Some Requisites of State Education;" a Lecture to the Preston County Teachers' Institute in 1890, on "Three Demands of Public Instruction;" address before the Soldiers' Re-union of Preston County, July 3, 1890; response to the toast "Women" at the West Virginia University Alumni Banquet in 1891; and his oration at the Eighth Annual Re-union of the Soldiers of Preston County, August 28, 1891.

Mr. Elliott is a pronounced Republican; is a member of the Republican Congressional Committee for the Second District; and in the campaign of 1890 took the stump for his party and spoke in every district in this county, and in some adjoining counties.

J. Ami Martin was born in Preston county June 6, 1849. He has been Clerk of the County Court for more than three successive terms, and is now serving his third term, which, when ended, will make over twenty years as Clerk—having served an unexpired term previous to being elected. He was Superintendent of the M. E. Sunday School at Kingwood for ten years, and leader of the Choir for about twenty years. He is Superintendent of the T. K. & F. R. R., is a large stockholder in it, and takes pride in the successful management of the road. Geo. A. Walls, a native of Grant district has been his efficient Deputy Clerk of the Court for ten years. Mr. Martin is interested in all public enterprises, and is genial in disposition and pleasant in business.

Julius K. Monroe, a fine picture of whom appears, is a son of Col. R. W. Monroe, of the Kingwood bar. He is Deputy Sheriff for Sheriff D. R. Jackson for the districts of Pleasant and Lyon, but makes a specialty of Surveying. He is a Civil Engineer of experience, renders satisfaction, and answers calls to various parts of the country. He is now Worthy Grand Chief Templar of the I. O. G. T. for the Grand Jurisdiction of West Virginia, and is serving his second term as such. He has also held the higher offices in the lodges of I. O. R. M., K. of P., U. R. of K. of P., and is a member of A. F. and A. M.

KINGWOOD DIRECTORY.

General Merchants—

Shaffer, Brown & Co.,
L. M. Albright,
Beavers & Fawcett,
Feather & Werner,
J. W. Blaker,
Jackson & Posten,
Jno. H. Brown.

Confectioners—

Mrs. Peter Voltz,
J. E. Murdock.

*Hardware, Farming Implements,
etc.—*

W. H. Murdock.

*Tinware and Farming Imple-
ments—*

Wm. F. Menear.

*Stationery, Books and Fancy
Articles—*

W. M. O. Dawson.

Drugs and Fancy Articles—

R. McMillen.

Newspapers—

The Preston County Journal,
published weekly by Jas. W.
White and Ed. M. Heermans,
\$1.50 per year.

The West Virginia Argus, pub-
lished weekly by J. Slidell
Brown, \$1.50 per year.

Saddler and Harness Maker—

Mac Evick.

Shoe Store—

C. W. Fawcett.

Shoe & Boot Makers—

W. S. Taylor,
C. W. Fawcett.

Milliners—

Mrs. Jennie Potter,
Mrs. L. M. Albright.

Dressmakers—

Miss Letitia Parks,
Mrs. Thos. Squires.

Civil Engineers—

J. K. Monroe,
D. M. Wotring.

*Contractor, Builder & Wagon
Maker—*

S. F. Ringer.

Contractors & Builders—

Wardwell & Hagans.

Barbers—

Jas. Terrill,
Frank Hackley.

Ice Cream Parlors—

Miss Minnie Neff,
Mrs. Peter Voltz.

Secret Organizations—

I. O. O. F.
Encampment,
Canton Preston,
D. of Rebekah,
I. O. R. M.,
Knights of Pythias,
U. Rank K. of P.,
Good Templars,
A. F. & A. Masons,
K. of L.,
G. A. R.

Planing Mills—

S. F. Ringer,
A. B. Menear.

Furniture and Undertaker—

H. C. Flythe.

Insurance Agents—

Jos. M. Godwin,
Jas. W. Parks,
Duncan McRa.

Real Estate—

Wm. G. Worley,
Duncan McRa.

Liverymen—

Elliott & Thomas,
Gus. J. Cresap.

Telegraph Operator—

Miss Minnie Neff.

Plasterers—

John E. Forman,
E. P. Forman,
I. N. Forman.

Music Dealer—

Roy C. Stone.

Beef Market—

Jas. W. Flynn.

Hotels—

Hotel Gordon, F. M. Thomas,
proprietor.

Exchange, P. R. Smith, prop.
Jenkins House, Wm. Jenkins,
prop.

Preston House, Mrs. B. M.
Squires, prop.

Central Hotel, Benoni Jordan,
prop.

Churches—

M. E., M. W Rider, pastor.

Presbyterian, ————

M. E. (colored.) ————

Physicians—

R. B. L. Trippett,
R. McMillen,
S. A. Pratt,
W. S. Martin,
Jas. H. Manown.

Lawyers—

Jas. A. Brown,
D. M. Wotring,
Wm. G. Worley,
Wm. G. Brown,
H. Clay Hyde,
Edw. S. Elliott,
P. J. Crogan,
I. C. Ralphsnider,
Geo. M. Ralphsnider,
N. J. Fortney,
R. W. Monroe.

Notaries Public—

J. A. Jackson,
Jos. M. Godwin,
N. J. Fortney,
Geo. A. Walls,
H. C. Hyde,
D. M. Wotring,
Duncan McRa,
Edw. S. Elliott,
Gus. J. Shaffer,
John M. Crane,
Francis Heermans,
Jas. A. Brown.

Blacksmith—

Geo. A. Williams.

Carpenters—

Albert Fortney,
Lee Bucklew,
S. W. Smalley.

Town Express—

Charles White,
Fent. Blaker.

Auctioneers—

Chas. Vickery,
C. C. Craig.

T., K. & F. R. R. Employees—

Conductor—Chas. Carroll.
Engineers—Newt. and George
McGee.
Agent—H. C. Ravenscraft.

Painters—

N. J. Fortney, (Sign.)
E. M. Menear,
Rome Menear,
Homer Ravenscraft.

Tinners—

Menear & Beavers.

Flouring Mill—

Graham & Graham.

Printers—

D. S. Guthrie,
R. A. Menefee,
S. D. Gatewood,
Jos. G. Brown,
Grant Bower,
Wanzer Dorsey,
Albert Dorsey,
Ed. Manown,
L. W. Heermans.

Coal Deliverers—

C. C. Craig,
John Greaser,
Mr. Trowbridge.

Improved Hogs & Poultry—

H. D. Carroll.

Postmaster—

Felix Elliott, Jr.

Town Officials—

Mayor—Gus J. Shaffer,
Recorder—James W. White.
Town Sergeant—J. W. Flynn.
Councilmen—W. S. Martin, J.
K. Monroe, W. H. Murdock,
Wilber Posten and Geo. A.
Williams.

Kingwood Academy—

Principal—Prof. Rufus Hol-
den.

Assistants—Mrs. Rufus Hol-
den and Miss Ida Spahr.

Jeweler—

H. H. Potter.

*Board of U. S. Examining Sur-
geons—*

R. B. L. Trippett,
G. L. Brown,
J. F. Michael.

Merchant Tailor—

Peter Voltz.

Stone Masons—

Cam. Messenger,
Ed. M. Messenger.

Lumber Manufacturers—

Ad. W. Albright,
E. J. Bowermaster,
W. H. Bell,
E. E. Reppert,
U. N. Orr,
Grove C. Jackson,
Gus. J. Shaffer.

HOWESVILLE.

Howesville is half way between Kingwood and Tunnelton, on the T., K. & F. R. R.

Merchants are J. J. Goeke & Sons and J. L. McKenzie. Mrs. Wright keeps a grocery and the postoffice. There are two shooch shops, several saw-mills near, and a fine Catholic and Methodist church. The people are German, Irish and native born.

TUNNELTON.

Tunnelton, on the B. & O. R. R., and at the junction of the T., K. and F. R. R., has an important situation. It is now an important shipping point for lumber.

There is a good store by A. J. Bonafield & Sons, also by Gibson Brothers. There are two shoo shops. John L. Combs, blacksmith. M. T. Powell is physician and surgeon, and keeps drugs. The Valley House is kept by S. R. Hardesty. The West Virginia House, by Craig Brothers. There is a schoolhouse, a Methodist parsonage and a Catholic church. Good Templars and Knights of Labor have lodges. John Brown has a foundry, and is a machinist. G. P. Durr keeps a livery stable.

Tunnelton is the publication office of Garner's Gleaner, a literary and local newspaper; size, eight pages of six columns each; price 50 cents a year; published monthly. W. Scott Garner, who has been connected with several newspapers and has considerable reputation as a writer, is the editor. The Gleaner has been published five years, and has a wide circulation in this and adjoining counties.



A. J. BONAFIELD.

M. C. Gibson & Bro. manufacture shoo, and are dealers in tanbark, staves, lumber and fertilizers and sell the Champion Mower. Telegraph operators, W. E. Maloney, W. J. Lavelle and Thomas Kinney.

Tunnelton is a good situation for wood, coal, coke or iron industries.

Population, about 350.

Notaries Public—

A. J. Bonafield,

S. R. Guseman,

M. L. Shaffer.

Station Agent—

S. R. Guseman.

Mail daily; twice each way.

Nearly all through trains stop at Tunnelton.

WEST END.

West End is one mile west of Tunnelton, at the west end of the Big Tunnel.

The West End Coke Company was incorporated June 9, 1881. The officers are, A. J. Bonafield President, Hon. John W. Mason Vice President, Major U. N. Orr Secretary, and W. H. Watkins Treasurer. The company own 1,700 acres of land situated on both sides of the B. & O. R. R., and extending from west end of Kingwood Tunnel to Austen Station. The Austen vein of coal is opened at various points along the railroad, and near Kingwood Tunnel the company have ten coke ovens in operation; also a screen for screening coal. The company does a considerable business in shipping coal in addition to shipping coke.

There is a vein of fire clay of good quality extending over the tract. Also, a vein of valuable iron ore opened at various points on the land.

The Newburg Shaft vein of coal can be reached on the property by shafting about 100 feet. The surface is fair grazing and timber lands.

AUSTEN.

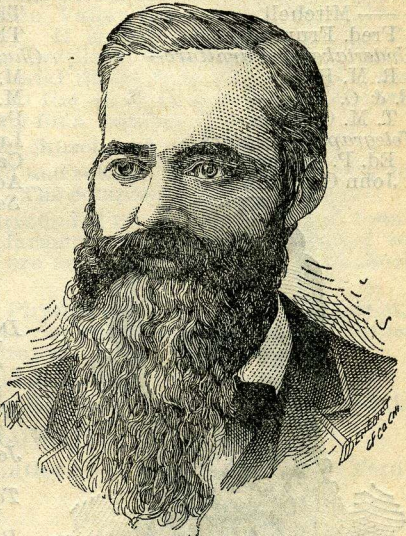
Austen is a mining and coke town on the B. & O. R. R., six miles east of Newburg. The Austen Coke Works Company own 2,800 acres of land and have 83 ovens. They make a splendid variety of coke from the Upper Freeport coal.

Charles Jessop has been Superintendent for the company for a number of years. The company has a store. The town has a Cornet Band, a school building, a lodge of Good Templars and Knights of Labor.

Mr. Charles Jessop, of Austen, is not only a highly esteemed gentleman, but is one of our best business men. The Austen Coke Works Company have valued his services by keeping him in their employ for a number of years, and he has been Superintendent of their works for quite a while. Mr. Jessop is reserved, but is marked as the perfect gentleman either in his home or among strangers.

NEWBURG.

Newburg is the largest town in the county. It is situated on the B. & O. R. R. It has for years been an important railroad and mining town. The Orrel Coal Company has operated there for years. They work the Pittsburg vein on the south side of the railroad, on Scotch Hill. They have for some time worked the Kittanning coal by means of a shaft, at a depth of 359 feet from the base of the hill near the railroad. They now work the Upper Freeport. There is plenty of coal, iron ore, fire clay, and lime in the hills about Newburg. The town has a five-room school building.



CHAS. JESSOP.

Dr. Wm. M. Dent, Newburg, West Va., was born March 6, 1831, at Granville, Monongalia county, Virginia. He is a son of Dr. Marmaduke and Sarah Dent. He received an academic education at the Monongalia Academy at Morgantown, studying medicine with his father, attending the Sterling Medical College of Columbus, Ohio. He practiced in co-partnership with his father for 18 years, locating at Newburg on the 1st day of January, 1863, where he has been actively engaged in the practice of his profession up to the present time, paying particular attention to surgery and female diseases. He is a member of the American Medical Association, the Medical Society of West Virginia, of which he has been Secretary, 1st Vice President and President. He is now one of the Division Surgeons of the railroad.

Newburg is the home and partly the place of business of J. R. Smoot, a large lumber manufacturer and dealer. Besides several mills he operates, he, in connection with his son Charles Smoot, has a general store in Newburg.

NEWBURG DIRECTORY.

Merchants—

Jas. R. Anderson,
J. R. Smoot & Son,
C. E. Ellis & Sons.
J. J. Talbott,
Orrel Coal Co.'s Store,
Emory Paul.

Grocers—

— Mitchell,
Fred. Frumhart.

Undertaker & Furniture—

R. M. Barb.

B. & O. Agent—

T. M. Clayton.

Telegraph Operators—

Ed. P. Anderson.
John Graham.



WM. M. DENT, M. D.

Barbers—

Fred Frumhart,
W. R. Stewart,
Sam. Edwards.

Tinner & Roofer—

John Harrington.

Public School—

Principal—M. S. Frey,
Assistants—L. W. Cobun, Mrs.
U. W. Showalter, Miss Cock-
lin.

B. & O. Engineers—

Wm. Frazier,
John Perrill.

Drugs & Fancy Goods—

F. M. Dent.

Drugs—

T. F. Lanham,
S. J. Posten.

Hardware—

Mr. Huggins.

Hotels—

The Vernon, Mrs. Wright,
The Davis, U. S. Davis.

Churches—

M. E., N. H. Prince, Pastor.
M. P.,
Presbyterian,
Lutheran,
Catholic,
Adventists.

Secret Societies—

I. O. G. T.,
A. F. & A. M.,
Knights of Pythias,
I. O. O. F.,
Knights of Labor.

Doctors—

W. M. Dent,
T. F. Lanham,
S. J. Posten.

Mayor & Notary Public—

D. J. Gibson.

Jeweler—

Henry Fisher.

Tobacco & Cigars—

W. R. Stewart.

Painters—

Lynch & Son.

Broom Factory—

J. W. Hartman.

Milliner—

Miss Plumber.

Notaries Public—

F. M. Dent,
Wm. M. Dent,
A. M. Moore,
Jas. McGee,
Thos. J. Showalter.

Beef Market—

B. Rabbitt.

Traveling Agents—

Frank Wright, for Kraft, Ro-
senberg & Bros., of Wheel-
ing.

Arthur Frey, for J. N. Murdock,
Druggist, Parkersburg.

A. M. Moore, for the Herb
Medicine Co., Weston.

INDEPENDENCE.

Independence is one mile west of Newburg. The M. E.'s, M. P.'s,

and Baptists have good churches. Good Templars, Knights of Labor, and J. O. U. A. M. have lodges. There is a good school building. The merchants have a good country trade.

Merchants, W. E. Sharps & Co., Wm. Jenkins & Son, and A. Fream & Son. Furniture, G. L. Brown. Milliner, Miss Koontz. Dressmaker, Mrs. King. Blacksmith, John Calvert. Flouring Mills, J. R. Smoot, and A. C. Scott. Physician, G. L. Brown. Pension Agent, Jacob Fream. Saddler and Harness Maker, L. C. Baker. Hotel, Thos. Harrington. Shoemaker, Wm. Fawcett.

Irondale Furnace is three miles from the B. & O. R. R., and is connected with it by the Iron Valley Railroad, which road belongs to the Furnace Company. It is now managed by Col. F. Nemegyie. Ore, coal and lime are plentiful to supply the furnace. Locomotives pull the raw material direct from the mines to the furnace, and convey the iron to the B. & O. Road. The furnace has been operated irregularly for a number of years.

There is a United Brethren church and a school house.

The Freeport coal is mined and coked. There is a foundry in connection with the furnace. The company operates a store.

Gladesville is a village surrounded by a beautiful glade country. The people are thrifty farmers. Country well adapted to grazing. Coal, lime and iron ore are plentiful. There is a school house and Baptist church.

Merchant, H. Trickett. Physician, E. K. Sutton. Dentist, Jas. Sapp. Saw, Planing and Grist Mill, Lee Miller. Blacksmiths, John W. Massey, and A. J. Brown.

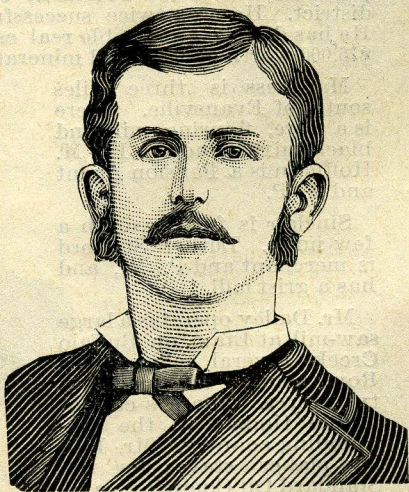
A Teachers' Normal is held at Gladesville nearly every year. Needed, a good shoemaker. Other enterprises would do well.

FELLOWSVILLE.

Fellowsville is six miles south of Newburg, on the N. W. Turnpike. It is in the midst of a great coal field now sought after by various companies. Good grazing land surrounds the place. The town has a public library, a school building, and a M. E. church.

Merchants: Watson & Co., Geo. Purell, Shay & Simpson. Undertaker: W. A. Watson. Physician: J. F. Michael. Hotels: Union, Mr. Robinson, Bishop House, Mrs. Bishop. Blacksmith: Mr. Kerchival. Flouring Mills: Philip Knotts, Mr. Royce. Tannery: Mr. Robinson.

W. A. Watson is a native of the county, and is one of the leading business men of his section of the county. He is interested in public enterprises, is pleasing in disposition and popular among his friends. He taught school for several years, but has been mer-



W. A. WATSON.

chandising at Fellowsville for several years. He has associated with him in his business his brother David Watson.

George Purcell has been merchandising at Fellowsville for several years. He was for a while editor of the West Virginia Argus, and is intelligent. Mr. Purcell is tasteful in appearance and habits, and does a nice business.



GEORGE PURCELL.

J. Nelson Baker, at present a farmer and stockman near Evansville, was born in Reno District, April 26th, 1850. He has ever since resided in that district. He attended the W. Va. College, and taught six terms of school. He has held various offices of importance, and is now President of the Board of Education of his district. He was twice successfully engaged in merchandising. He has done considerable real estate business, having sold over \$75,000 worth of land and mineral in the last ten years.

Marquess is three miles south of Evansville. There is a store, flouring mill and blacksmith shop. F. M. Hoffman is a Pension Agent and N. P.

Sinclair is further south a few miles. Luther Stafford is merchant and P. M., and has a grist mill.

Mr. Dailey operates a large saw-mill at Etam, on Buffalo Creek, several miles above Rowlesburg. The place has two stores. There is considerable timber in the surrounding country. Mr. Dailey makes staves for the Standard Oil Company, and has a process of manufacture not used elsewhere in the county. Etam has two churches and two parsonages—M. E. and M. P.



J. NELSON BAKER.

EVANSVILLE.

Evansville is three miles west of Fellowsville. There is a good country surrounding the town—suited to grazing and agriculture. Mr. Bowman has a large woolen factory. Merchants, Geo. N. Walters, Chas. Talbott, and H. E. Jenkins. Maj. Means has a tannery. Ed. Thomas keeps a hotel, and Wm. Jenkins is blacksmith. Suggested enterprises: a steam flouring mill, requests for investigation for oil. Sheep raising is wisely recommended for the surrounding country. The section has coal and lime. I. O. G. T. and I. O. O. F. have lodges.

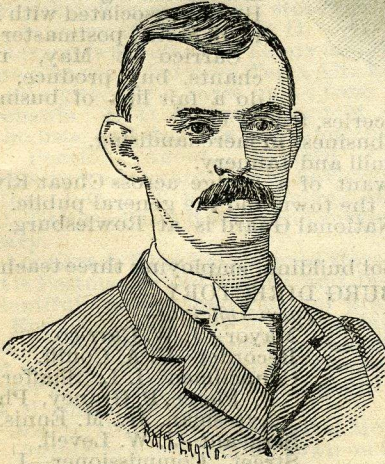
ROWLESBURG.

Rowlesburg has a natural situation to make it an important town in point of industries and manufacture. It is situated on the B. & O. R. R. where it crosses Cheat River. It is quite a lumber market. From the immense forests above on the river, logs are hauled and floated down to Rowlesburg in sufficient quantities to supply several large mills. The supply is almost inexhaustible, Cheat River coming through dense forests for miles above. As this is a good point for shipping from, and as the raw material of wood is there in any quantity, and water in abundance, I do not see why it can not be made the seat of a number of wood industries, tanneries, etc. A furniture and handle factory ought to be successfully operated. A foundry has been suggested as a good industry. The



W. W. SHOCH.

railroad company keeps seven engines there, used for helping trains up the mountains, east and west. There are eight saw-mills in and near the town. Tan bark and staves are shipped. A fine quality of building stone is quarried at Rowlesburg. Also, a flag quarry is at the town. The rock is of fine quality. Both these could certainly be worked to advantage. The town has beautiful sites for Hotels, and the healthful air, beautiful scenery, boating and fishing advantages would make it a desirable place for summer guests.



O. F. HARDESTY.

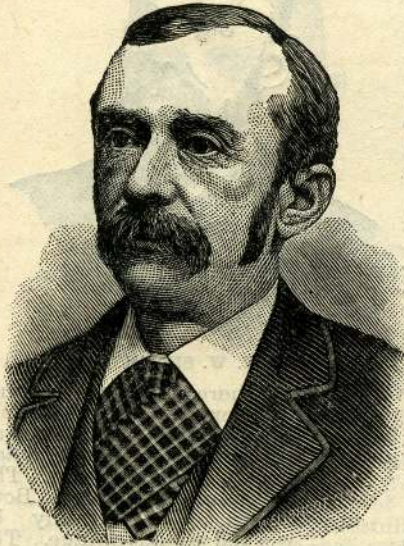
a large business, on firm business principles.

O. F. Hardesty is the successor to the firm of Hardesty & Son. Mr. Hardesty is a young man, but has a large store, and does a large merchandising business. His stock consists of Flour, Feed, Dry Goods and Notions.

W. W. Shoch, one of the leading men, and also one of the leading merchants of Rowlesburg, a native of York county, Pa., has been merchandising successively and successfully in Rowlesburg for eighteen years. Mr. S. is a splendid business man, public spirited, intelligent, and genial. He is ever ready to lend his aid in any enterprise for the good of his town and county. He does

There is a postoffice and sawmill at Macomber, five miles above Rowlesburg. Mr. Macomber operates the mill.

S. Hinkle & Co., perhaps, have the largest Saw and Planing Mill in the county. They are a good firm, and have a large business elsewhere in the State. They manufacture and handle all kinds of rough and planed lumber, fancy work for finishing buildings, etc. Mr. S. Hinkle, a good cut of whom we give herewith, is at the head of the firm. Mr. Hostetter is associated with the firm.



S. HINKLE.

E. N. Moore deals in groceries, fruits, etc.

Mrs. Coniff does a good business in merchandising.

Thos. Rogers has a feedmill and tannery.

The town suffers for want of a bridge across Cheat River.

This inconvenience is felt by the town and the general public.

Co. E., 1st Reg. W. Va. National Guard is at Rowlesburg. C. G. Dawson, Captain.

The town has a fair school building, employing three teachers.

ROWLESBURG DIRECTORY.

General Merchants—

W. W. Shoch,
Bishop & Manown,
O. F. Hardesty,
Carrico & May,
Jos. A. Pugh,
Mrs. Coniff.

Grocer—

E. N. Moore.

Notion Store—

Miss Mollie Wheeler.

Furniture & Undertaker—

H. H. Wheeler.

Physician & Surgeon—

M. H. Proudfoot.

Town Officials—

Mayor—J. W. Carrico.
Recorder—U. A. Coniff.
Councilmen—I. L. Shaffer, J. F. Pierce, P. Graney, Philip Ayresman, Jr., M. Ennis.
Sergeant—J. W. Levell.
Street Commissioner—J. C. Hooten.

Churches—

M. E., A. B. Rohrbaugh, pastor.
M. P., Rev. Poynter, pastor.
Catholic, Father Boyce, pastor.

Geo. Hayes manufactures a large amount of oak and other kinds of lumber.

Special inducements would be offered by the town to any one of reliability who would establish a Carriage, Wagon or Furniture Factory, Pulpmill, Hotel, Tannery, Feedmill or Foundry. The town deserves the attention of persons wishing to start business of a like kind.

The firm of Bishop & Manown, merchants, is composed of C. M. Bishop, of Kingwood, and J. F. Manown. The firm is a strong one. Mr. Manown conducts the business of the firm.

Jos. A. Pugh does a large merchandising business. He has associated with him E. B. Stone, postmaster.

Carrico & May, merchants, buy produce, and do a fair line of business.

Telegraph Operators—

L. L. Cockerel,
T. E. Burke.

Milliners & Dressmakers—

Miss Bertie Brown,
Miss Blanche Street.

Contractors & Builders—

Dawson Brothers.
D. N. & I. L. Shaffer.

Publication—

The Earnest Helper—a local
and religious paper published
bi-weekly; Rev. A. B.
Rohrbaugh, Editor.

Blacksmiths—

Wm. Lipscomb,
J. W. Carrico.

*Lumber Merchants & Manufactu-
rers—*

P. A. Coniff,
S. Hinkle & Co.,
J. J. Storer,
Geo. Hays,
Cheat River Lumber Co.,
I. C. Ralphsnider.

Hotels—

Commercial, by Mrs. Hale,
River House, by Mrs. Knotts.
Heath House, by Mrs. Heath.

Amblersburg and Rodamers, are between Rowlesburg and Terra Alta, and Anderson or Eighty Cut is east of Tunnelton.

Smith & Forman have a store at Lenox; and Geo. H. Trembly has a tannery at Tannery P. O. Lime and coal are plentiful. R. P. Jackson is a Notary at Lenox and G. H. Trembly at Tannery. These places are between Terra Alta and Brandonville.

Albrightsville is three miles from Kingwood on Cheat River. Merchants: H. O. Blaker, Cloyd M. Crane. Hotel: Mrs. Field. Methodists, and Baptists have churches. A. G. Mason is Notary, and Pension Agent. Bernard Cressler has his inventive powers turned toward aerial navigation. There are two blacksmiths. I. O. G. T. have a lodge. Harry Casteel is Postmaster. A. C. Titchenell is a Notary and surveyor. Col. J. A. F. Martin is a Notary.

Lenhart & King have a good store at Valley Point. J. A. Lenhart is Postmaster and Notary, and Jas. Miller is blacksmith. Coal is plentiful and the land good for grazing. Lenhart & King with Mr. Englehart own and operate a large woolen mill at Guseman. This is good property, and is successfully operated. It is one of the best enterprises of the kind in the county. Ervin Wilson is Postmaster at Guseman and owns and operates a flouring and saw mill. Jos. M. Shaw is a Notary.

Jos. N. Miller is Postmaster at Morgan's Glade.

Corinth is a new mining town on the B. & O. near the Maryland line. There are now 56 coke ovens and 50 more partly built. This company operating is the Oakland Coal and Coke Company. Gates & Sharp will open a new field on the north side of the railroad soon, and will also work the fire clay. This is likely soon to be an important mining town. Oscar Posten and Thompson Bros. are merchants, and Wesley DeBerry has a beef shop.

B. & O. Agent—

M. J. Fleming.

Shoemaker—

H. M. Wilson.

Secret Societies—

Red Men,
Odd Fellows,
D. of Rebekah,
D. of Pocahontas,
Good Templars,
Rowlesburg Encampment.

Barber—

E. N. Moore.

Beef Market—

A. B. Sanders.

Notaries Public—

H. H. Wheeler,
A. H. Bowman.

Public School—

Principal—Miss Lillie Elliott
Assistants—Miss Mattie Cope-
man, Miss Emma Emerson.

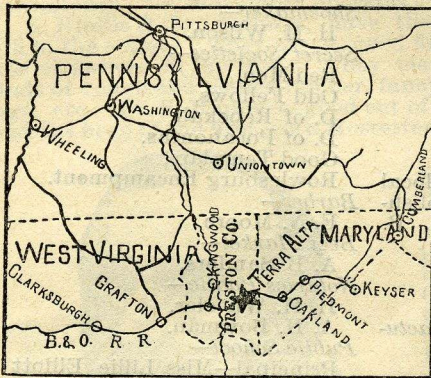
B. & O. Engineers—

Robert Hollis, John J. Hunter,
Pat. Graney, Ed. Anderson,
John Carnes, Peter Cozad,
J. L. Shaffer.

Town Express—

Wm. Selders.

TERRA ALTA.



MAP SHOWING COMMERCIAL SITUATION
OF TERRA ALTA.

Terra Alta, in some respects the most important town in Preston county, is situated on the B. & O. R. R., 64 miles from Cumberland, and 137 miles from Wheeling. It is the highest point on the B. & O. in the county. It has a large railroad and country trade. There is a good country surrounding the town. Fruit, buckwheat, oats, potatoes and grass are raised in the surrounding country. Tan bark, staves, lumber, shingles, and buckwheat flour are the principal articles exported. It is estimated

that 200,000 pounds of a fine quality of buckwheat flour are manufactured by the mills there and shipped annually.

There are good roads coming in from every surrounding section. But the greatest advantage offered by the town we have not yet mentioned. Nature has fitted the place, from its great elevation, to be the best suited for a summer resort of any place along the mountains. There are beautiful natural situations. This matter is worthy of special mention and attention.

Other industries suggested are a foundry and a tin shop. The people there are interested in improvements and will donate grounds with a beautiful situation for a summer hotel to any one who will build. The creamery there should prove a success, as the section is adapted to grazing and the cool climate suited to the manufacture of good butter. Sheep raising would be profitable for the surrounding country.

The town has a good school building, employing three teachers.

The following denominations have good churches: Presbyterian, Baptist, Catholic, and M. E.

Secret organizations are represented as follows: Good Templars, Odd Fellows, Knights of Pythias, Knights of Labor, and A. O. Hibernians. The Knights of Pythias have a three story building in one of the best situations in the town.

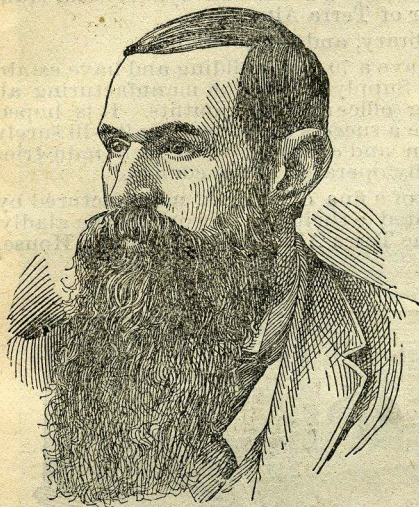
The Terra Alta Woolen Mill is the largest in the State. It is operated by J. W. Rigg & Son. The building—a new one—is a large three story brick. There is a switch from the B. & O. Road to the building, bringing all raw material where needed, and taking the fine manufactured articles away. It is a large two set mill with improved machinery. It gives employment to twenty-five hands, and requires about 125,000 pounds of wool annually. It sends out articles of Cloths, Cassimeres, Blankets, Flannels. Yarns, Jeans and Skirts into every leading city, and nearly every State. More industries of this kind are needed, and the grazers of our county should produce a better quality of wool to supply them. (See cut of building on page 8.)

The firm of Offutt and Lakin is one of the strongest in the county. D. E. Offutt senior member of the firm, operates the largest general store in Western Maryland. J. S. Lakin, the other

member of the firm, and manager of the store here is a son of Rev. C. H. Lakin. He is well educated, and is one of the best business men of the county. We give a cut of Mr. Lakin.

The firm, besides general merchandise, make a specialty of fertilizers, and has a building where they keep large amounts, which they sell in various parts of the county. They handle all kinds of country produce.

J. P. Shafer, M. D., of Terra Alta, West Va., was born, reared



J. P. SHAFER, M. D.

and educated in Monongalia county, West Virginia. Read medicine with Brock Brothers, of Morgantown. Attended lectures, and graduated in the Louisville Medical College, of Louisville, Ky., in 1882, having practiced three years while attending. Seven years of his practice has been in Preston county, and five in Parkersburg, W. Va. Commenced his practice in this place two and a half years since. He went into a fine practice at once on coming and continues to this writing. He has won a reputation as a safe and skillful practitioner and specialist in female troubles, liver, kidney, dyspepsia, catarrh, and asthmatic diseases. He is decidedly temperate in his habits, attentive to

business, and reasonable in his charges.

W. T. White, besides General Hardware, is agent for the Champion Mower, Reapers and Binders.

A new bank has just been incorporated with a cash capital of \$20,000 with the privilege of increasing to \$200,000.

The B. & O. depot is a good brick building.

A nice new hotel is being completed by the Terra Alta Hotel Co., that will prove a great good for the town, and Col. N. W. Fitzgerald is building a large Summer Hotel.

The town has a weekly local paper, The Terra Alta Oracle, published and edited by G. A. Bolden. Price, \$1.25 a year. There is also published a K. of P. paper, The Pythian Banner, 50 cents a year; and Secret Society Gossip, an A. O. K. M. C. paper, 50 cents a year.

W. C. Shafer is an artist of experience, and renders satisfaction in all classes of work.

The business and professional men of the town, with scarcely an exception, are gentlemen in every respect, and do not need special mention.

J. H. Rodeheaver does a large Furniture business. His building is one of the largest to be found. He has received a patent for a valuable desk lock. The desk is made by Kolhorst & Co.

C. W. Mayor & Son is an old firm, doing a large business, country and town, and are large shippers of buckwheat flour.

Parley DeBerry handles lumber, shingles, staves and produce. Fox Bros. handle ties, staves and country produce.

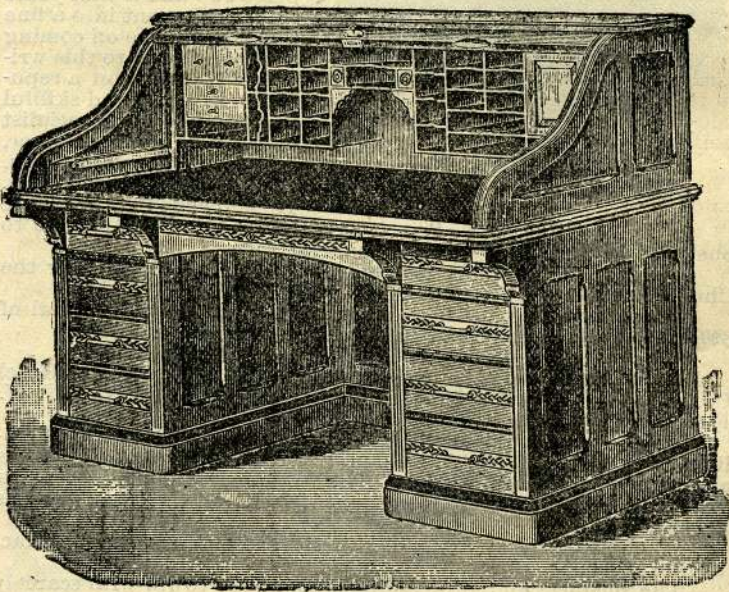
G. A. Mayer does a good business handling all kinds of general merchandise.

John P. Jones is one of the leading and successful business men, not only of his town of Terra Alta, but of the county and of the State. He has been in both houses of the W. Va. Legislature, and is always active in advancing the interests of his town and the county. Mr. Jones is a native of Wales. He is now Real Estate and Insurance Agent, Notary Public, Conveyancer and Manufacturer. He is now Mayor of Terra Alta.

The town has a good Library, and Cornet Band.

Henry Kolhorst & Co. have a 70 x 40 building and have established the Terra Alta Building Supply House, for manufacturing all kinds of Furniture including office and bank outfits. It is hoped this establishment will prove a success to the firm, as it will surely be a good thing for the town and county. Other such industries could certainly be successfully operated in the county.

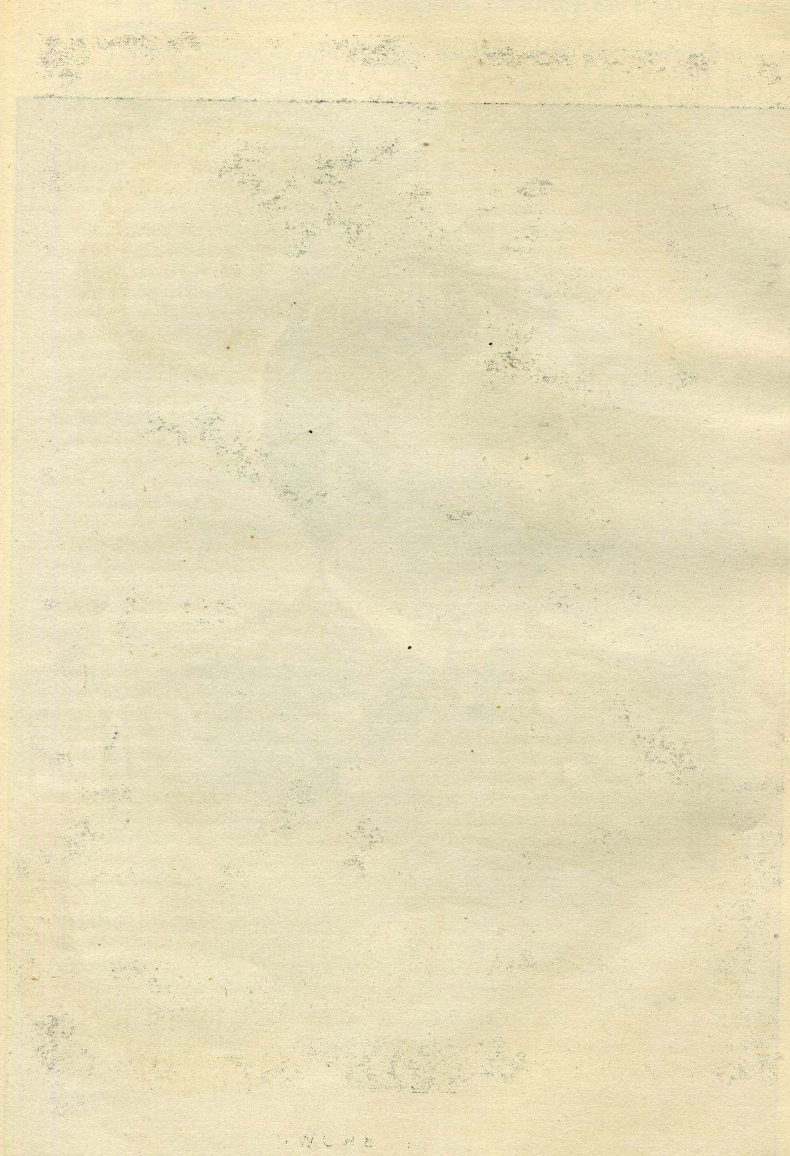
We give herewith a cut of a fine office desk manufactured by them. Any information wanted in their line of work will be gladly furnished by addressing, The Terra Alta Building Supply House, Terra Alta, W. Va.





R. M. G. BROWN,

Lieutenant U. S. Navy.



W. O. BROWN
NEW YORK

TERRA ALTA DIRECTORY.

- General Merchandise*—
 Offutt & Lakin,
 Parley DeBerry,
 Fox Brothers,
 C. W. Mayer & Son,
 G. A. Mayer.
- Furniture & Undertaker*—
 J. H. Rodeheaver.
- Hardware & Tinware*—
 W. T. White.
- Farm Implements*—
 Wm. H. Glover,
 W. T. White.
- Woolen Factory*—
 J. W. Rigg & Son.
- Confectioners*—
 Mrs. E. Joyee,
 W. L. Killan.
- Hotel*—
 Washington House—M. F. Stuck, proprietor.
- Saddle & Harness Mf'gs.*
 W. A. McGinnis,
 Thomas Morgan.
- Cigar Factory & Barber*—
 J. M. Flanagan.
- Art Studio*—
 Wm. C. Shaffer—Photography
 Copying and Fine Art work.
- Railroad Agent & Operators*—
 J. R. Walker,
 Wm. Phillips.
- Physicians & Surgeons*—
 R. R. Frey,
 S. M. Scott,
 J. P. Shafer.
- Town Express*—
 A. H. Parsons.
- Real Estate Agents & Notaries*
Public—
 J. P. Jones,
 W. A. McGinnis,
 A. J. Elliott,
 H. C. Beatty.
- Jewelers*—
 B. DeWitt,
 Jas. D. Benson.
- Livery*—
 A. J. Elliott.
- Flouring Mills*—
 Freeland & Casseday,
 Isaac Smith.
- Milliners*—
 Ellen Connell,
 Mrs. B. Freeland.
- Dressmaking*—
 Miss Effie Spurgeon.
- Public Schools*—
 Principal—Ben. H. Elsey,
 Assistants—Miss Hattie White,
 Miss Nettie Herndon.
- Dentist*—
 G. B. Hardy.
- Blacksmiths*—
 E. J. Miller,
 Jacob Miller,
 Smith Forman,
 Wm. F. Fraley.
- Beef Market*—
 A. Staley Shaw,
 Lot M. Spurgeon.
- Postmaster*—
 B. F. Fraley.
- Furniture Factory*—
 Henry Kolhorst & Co.
- Building Contractors*—
 J. W. Hill,
 David A. Freeland,
 John Zotz.
- Ice Cream Parlor*—
 Mrs. B. Freeland.
- Boot & Shoe Maker*—
 Chas. Zeller.
- Wagon Maker*—
 Elias Kelly.
- Gunsmith*—
 E. D. Benson.
- Tinner*—
 W. H. Garner.

UNION DISTRICT.

Painters Mill is two miles from Aurora. J. H. Painter is Postmaster and has a flouring, saw, and woolen mill. He has W. B. Sawyer connected with him in business. Good situation for a store. Lime is plentiful. Land well suited to grazing.

Carmel is one half mile from Aurora. L. C. Shaffer is merchant; J. W. Shaffer is blacksmith and Thomas Startzman has a tannery. Mr. Spiggle manufactures a patent washing machine. The town has a good Lutheran church, Lutherans and Methodists have parsonages. The surroundings are described in the sketch of Aurora.

Aurora is ten miles from Terra Alta. It is more important as a place for Summer Resorts. The merchants are: D. Ridenour & Son, composed of David and E. O. Ridenour, and the firm of McCrum

& Son, composed of Summers and Page R. McCrum. Thomas Pierce is blacksmith. Ridenour & Son keep the postoffice. Page R. McCrum is a Notary.

It is situated upon the crest of the Alleghanies overlooking mountains and valleys in the most picturesque portion of the State, and is surrounded by towns and places much frequented by summer tourists. The reputation of this locality as a Health Resort is well known. It is free from Hay Fever, Fogs, and Malaria. The scenery is surpassed nowhere in this country. All kinds of amusement are furnished. The beautiful groves, "horse shoe" spring, Cheat river, at the base of Cheat mountain three miles away, the Backbone mountain, Stemple Ridge, Shaffer's Knob, and Blue Ridge, all tend to make the place delightful and the scenery beautiful.

James H. Shaffer's hotel, The Aurora House, is one of the best to be found. He has two large buildings. One is four and the other three stories high. He has the best accommodations, and a large custom.

J. A. Lantz has a good hotel being a nice three story building. He can accommodate about 75 guests.

H. K. Wilt can nicely accommodate about twenty guests.

A. T. Shuttlesworth will open a new hotel next year.

There is a Methodist church, and a two story school building, and a public library.

Loyd Lantz is interested in improved stock.

L. C. Shaffer's beef market supplies the several hotels with beef.

The people of this section are wisely interested in grazing.

J. Roy Arnett, M. D., is the popular physician.

J. A. Lantz is a boot and shoe maker.

Judge Vale has a large Summer Resort at Brookside one mile from Aurora. He has ten buildings and can accommodate about 150 guests. Mr. Fresh has a grist-mill and is Postmaster.

There is a store at White P. O. on Stemple Ridge, five miles from Aurora, on the St. George pike.

Horse Shoe Run, and Sell Postoffices are each about six miles from Aurora. Mr. Wotring is Postmaster at the former place and Mr. Sell at the latter.

Eglon is a nice village three miles from Aurora. Its surroundings are delightful. General Merchants: Julius Scherr, Peter Fike, L. C. Lantz. Julius Scherr is Postmaster; S. K. Fike blacksmith; J. S. Hendrickson has a Cabinet shop; W. S. Lantz is shoemaker, and Dr. A. L. Wagner is the physician. A. Werner keeps the Eglon House and Louis Bush the Mountain Home. Both are Summer Resorts. Mr. Bush has a large hotel and can accommodate a number of guests. Lutherans and German Baptists have good churches. There is a schoolhouse in Eglon and two saw-mills near the place.

The surrounding country is adapted to grazing, but corn, oats, wheat potatoes and all kinds of fruit do well. Lime is plenty and thus enables the farmers to enrich their land. More hotels, a flouring-mill and a tannery would do well at Eglon.

A more thrifty, industrious people can not be found than the people of this district. They are mostly of German descent.

CRANESVILLE.

Near the Maryland line on the top of the mountains at the base of two prominent elevations, Nettle Ridge and Pine Swamp Knob, is nestled the village of Cranesville. The place has a beautiful situation and surroundings. As you approach the village three nice churches, Methodist, Evangelical and Lutheran, point their steeple to the sky. Over the village hovers the two knobs named above. In one direction dense forests of pine confront the view; in another

beautiful meadows, and beyond them rich hillsides where cattle graze in luxury, present a scene of beauty, while the air is pure and healthy. Lime and fire-clay are plentiful. There is no better cultivated land in the county. All kinds of grain, grass and fruits do well. Grass and oats do especially well. The principal industry of the place is its timber. Spruce is in abundance. The Snowy Creek Railway carries the spruce from that section to the B. & O. R. R., a distance of eight miles, where it will be made into pulp and used by the Cumberland Paper-mill Co. This enterprise requires the work of from 75 to 100 men. The road and the entire enterprise is owned and operated by Offutt, Lakin & Rinard. The new station on the B. & O. R. R. where they ship from is called Rinard.

Some mineral springs near Cranesville are quite curiosities. Trout are plentiful, and Browning's Dam is nice for boating and fishing. I do not know of a better place for a summer hotel than Cranesville. All this region is called the Pine Swamp, from the amount of pine and swamps found there. The merchants are: Browning & Albright, J. W. Feather, Wm. Shroyer. M. L. Fichtner is the physician and keeps hotel. Albert Teets is Postmaster and Notary. W. A. Guseman is also a Notary.

Daniel Tithenel is Postmaster and Notary at Pleasant Hill P. O. three miles from Cranesville, and B. A. C. Miller is merchant at Henry P. O., two miles from Cranesville. Sylvester Albright is Postmaster.

BRUCETON,

is 16 miles north of Kingwood. It is a nice in-land town. The section is underlaid with coal, lime and iron ore. It is fair for farming, grazing and fruits. Big Sandy Creek affords boating and fishing. The place would be suited for summer guests if accommodations were made for them. Bruceton is on a proposed railroad, that has already been surveyed, connecting our county direct with Pittsburg. Merchants: Ben. F. Huggins, Charles E. Bowers. Saddler & Harness maker, W. H. McGibbons. Physicians, M. S. Bryte John S. Nedrow. Woolen-mills, Charles Kantner. Blacksmiths: Wm. Miller, Jas. A. Rodeheaver. Shoemaker, Jacob Cobun. Cabinet maker, Samuel Wiles. Hotels, M. S. Bryte, Moses Silbaugh. Jeweler, Oliver Scott. Carpenter, Wm. King. Postmaster, T. S. Cunningham. Silas Matheny, has a saw and planing mill, and Immanuel Beeghley has one of the largest flouring mills in the county. Notaries Public, John H. Feather, W. M. Wolf, John E. Ormand. Churches, Lutheran and Christian. There are also, Methodists and Dunkard Baptists. There is a Teacher's Normal held here nearly every year. Teacher, Lillie Barnes. Secret Societies: I. O. O. F., Encampment, G. A. R., J. O. U. A. M., I. O. G. T.

Enterprises recommended, investigation for oil, a woolen mill, and a creamery. The postoffice is Bruceton Mills.

Brandonville is one mile from Bruceton, and its general surroundings are similar. Merchant and Notary Public, R. B. Waddel. Hotel, Alpha D. Hagans. Tanneries, O. F. McKee. Mary Cuppett. The town has a brick Methodist church, and a school building. Teacher, Thankful J. Liston.

Brandonville was incorporated 1858.

Mr. Muller has a cigar factory near Brandonville.

Clifton Mills is three miles north of Brandonville. Merchants: John Harrader & Son, Wm. Colliers. Mr. Evans has a good flouring mill. Jas. Bird is blacksmith. A nice country surrounds the village.

Pisgah is seven miles from Bruceton. Wm. Rogers and Jesse Cale are merchants. There is a blacksmith shop and a Methodist church.

Hazelton is in the northeast part of the county. Wm. D. Arthur is a leading business man of that section. He has one of the best flouring mills in the county and has a good store.

Glade Farms is four miles north of Hazelton. Dr. Mitchell is merchant. All this section is good for agriculture and grazing and the farmers are among the most thrifty in the county. Lime is plentiful and enables the farmers to enrich their land.

Rockville is on Big Sandy Creek. Harvey Walls is merchant, and there is a good flouring mill. There are two blacksmiths.

Metheny & Musser are Well Drillers.

J. M. Metheny is Postmaster and has a grist mill at Hudson. Jesse Martin is a surveyor and Notary Public.

VALLEY DISTRICT.

This is a beautiful and rich valley, rich for agricultural and grazing purposes, and it is also in mineral. The farmers are thrifty. There are several veins of coal, the largest is from 8 to 10 feet thick. Lime is plenty in most parts of the district and is used extensively by the farmers in the improvement of their land. There are a number of nice farms. The farmers generally have improved stock.

There are two towns in the district, Masontown and Reedsville.

At Masontown the merchants are: S. L. Cobun, Geo. M. Cobun and E. M. Hartley. Grist mill and planing mill, J. A. Cox. Physician, J. A. Cox. B. E. Lemon is blacksmith. Methodists, Presbyterians and Evangelicals have churches, and the first two have parsonages. There is a school building. A summer normal for teachers is held here nearly every year, and often by one of the best educators in the state. The place has a reputation for the general intelligence and morality of its people. A number of persons from here now hold positions of prominence.

The place has a nice situation, while only a few miles, is the romantic Cheat, Beaver Hole and the noted Sandstone Cave.

Wait. W. Hartley sells Farm Machinery. A. F. McMillen is a Notary Public and surveyor. Dr. Cox is also a Notary. S. L. Cobun is Postmaster,

Reedsville is a similar town with similar surroundings three miles from Masontown. Mason Watson is merchant and Postmaster. He does a good business. David C. Zinn is a Notary, and is agent for Farm Machinery. T. J. Watson is a Notary, and Pension Attorney. J. W. Guseman is a Notary. There is a blacksmith shop, a Methodist church, a school building, and a lodge of Odd Fellows, Encampment, and Good Templars. The Odd Fellows have their own building. N. W. Kern is a carpenter. Henry Reed makes an improved bed spring. Lloyd House by Mrs. Lloyd.

Wm. B. Brown has a flouring and saw mill three miles from Masontown. The section is rich in mineral and good for grazing.

Geo. A. Herring is merchant and Postmaster at Herring eight miles north of Kingwood. We give a picture of Mr. Herring. He is one of the successful business young men of the county. He began business on a small scale, but through industry and correct business habits, he is now enabled to do a good business.

Methodists and Baptists have churches near.

David Graham has a saw mill, and J. M. Strahan is a Notary.

Wm. G. Conley, a cut of whom we present, is a native of the county, is self educated and worked on a farm to support his widowed mother. He prepared himself and taught his first school when 17 years of age, and has been teaching nearly every year since. His father was principal and a teacher in the Kingwood Academy for several years. He was elected County Superintendent of Schools in May, 1891. His mind is turned toward the profession of law.

The building is the most beautiful in the county
for its location, its architecture, its
interior and exterior, and its
grounds. It is a model of
modern architecture and
interior decoration. The
grounds are well kept and
the building is a credit to
the county.

VALLEY DISTRICT
This is a beautiful and well
kept building. It is a credit
to the county and a model
of modern architecture.
The interior is well
decorated and the grounds
are well kept. The building
is a credit to the county
and a model of modern
architecture. The interior
is well decorated and the
grounds are well kept.

Johnston is a beautiful town
with a fine school building
and a fine church. The
grounds are well kept and
the building is a credit to
the county. The interior
is well decorated and the
grounds are well kept.

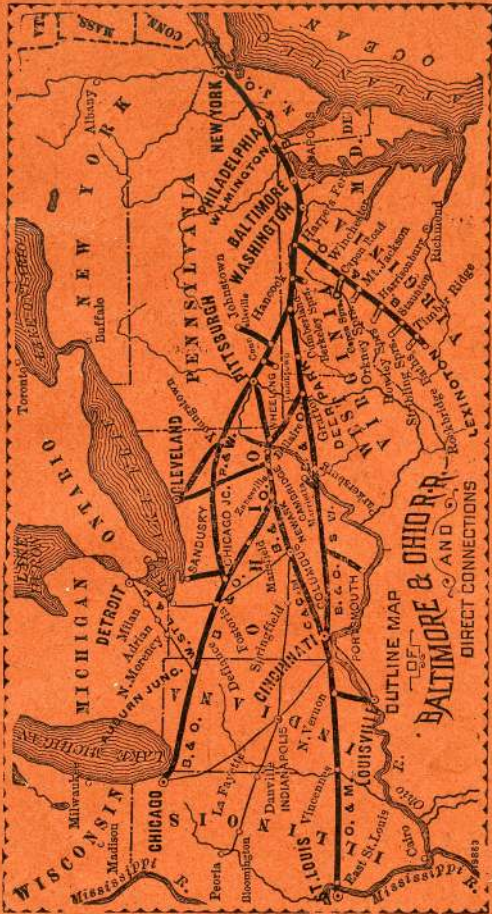
Johnston is a beautiful town
with a fine school building
and a fine church. The
grounds are well kept and
the building is a credit to
the county. The interior
is well decorated and the
grounds are well kept.

HOW TO REACH PRESTON COUNTY.

The situation of the County has been else where given. We give herewith a Map of the Baltimore & Ohio Railroad, one of the great lines of railroad of the country, passing throu' the county. Its eastern terminus is New York city, and via Baltimore, Washington, Cumberland, Pittsbu'h, Wheeling, Parkersburg Cincinnati, Cleveland, and Indianapolis reaches the western cities of St. Louis and Chicago.

Thus it will be seen that this rich county is easily accessible from every part of the country — east and west, north and south, by this road and other roads with which it connects.

While the maps appended will enable anyone to see how to reach this county, and while a full and fair description has been given, other information as to price of lands, its location, etc., will be gladly furnished to those who desire it, by writing to Duncan McRa, Real Estate Agent, at Kingwood, West Va.



CONCLUSION.

This concludes the work that was begun some time since. The object of the work is to show to those away what we have. The great abundance of our coal, iron ore, fire clay, lime, sandstone, and forests undeveloped, and our fertile soil, only await the touch of industry and capital to add to us great wealth. Let us encourage them and invite them to come among us.

We hope the county and every business and professional man will be benefitted by the work, which if true, may lead to the publication of an improved edition.

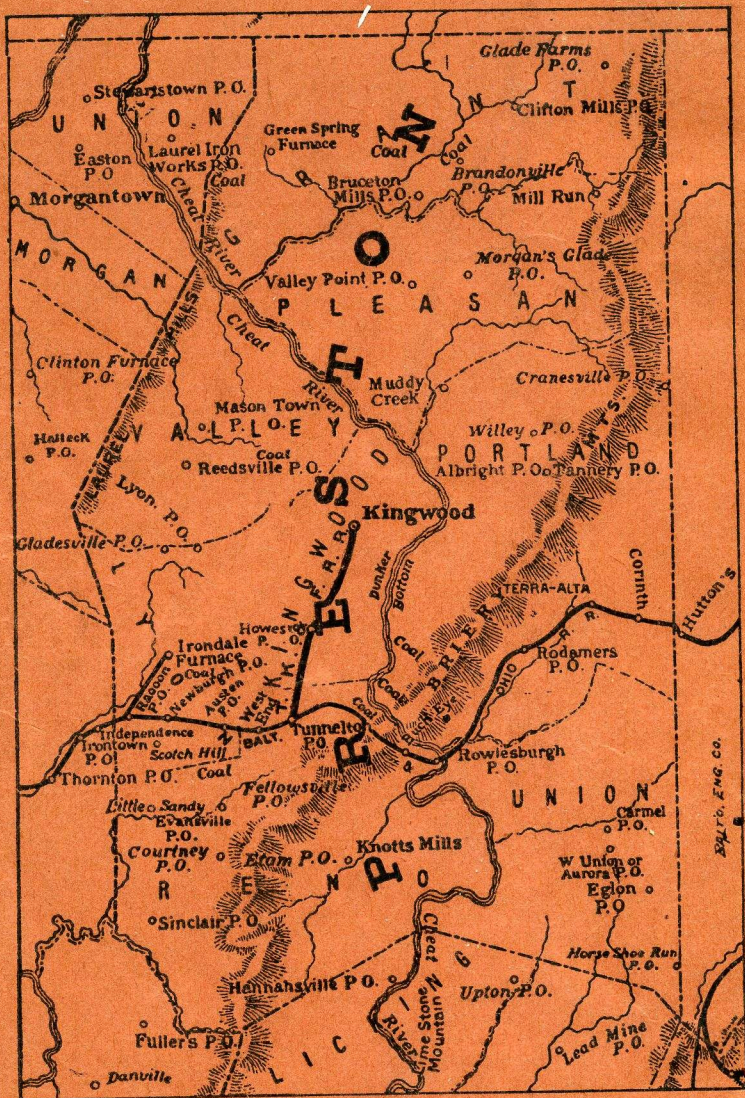
We acknowledge some errors and some disarrangement of the work, but we are enabled to present about all the facts intended.

Thanking all for their aid, for assurance of their patronage, and hoping that all will be mutually benefitted, and that we will be co-workers in making Preston a richer and greater county,

I am, respectfully,

Kingwood, W. Va., Dec. 15, 1891.

DUNCAN McRA.



Map of Preston County, showing its Boundaries, Districts, Towns, Postoffices, Rivers, Creeks, Mountains, Location of Coal, and Railroads.—B. & O. and the connection of the T, K. & F. with it.